

6265A10

16A-7

# Harris Central Appraisal District



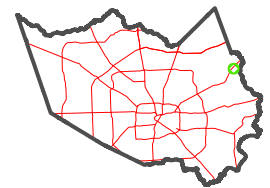
0 45 90 180 Feet

PUBLICATION DATE: 5/6/2024

Geospatial or map data maintained by the Harris Central Appraisal District is for informational purposes and may not have been prepared for or be suitable for legal, engineering, or surveying purposes. It does not represent an on-the-ground survey and only represents the approximate location of property boundaries.



## MAP LOCATION



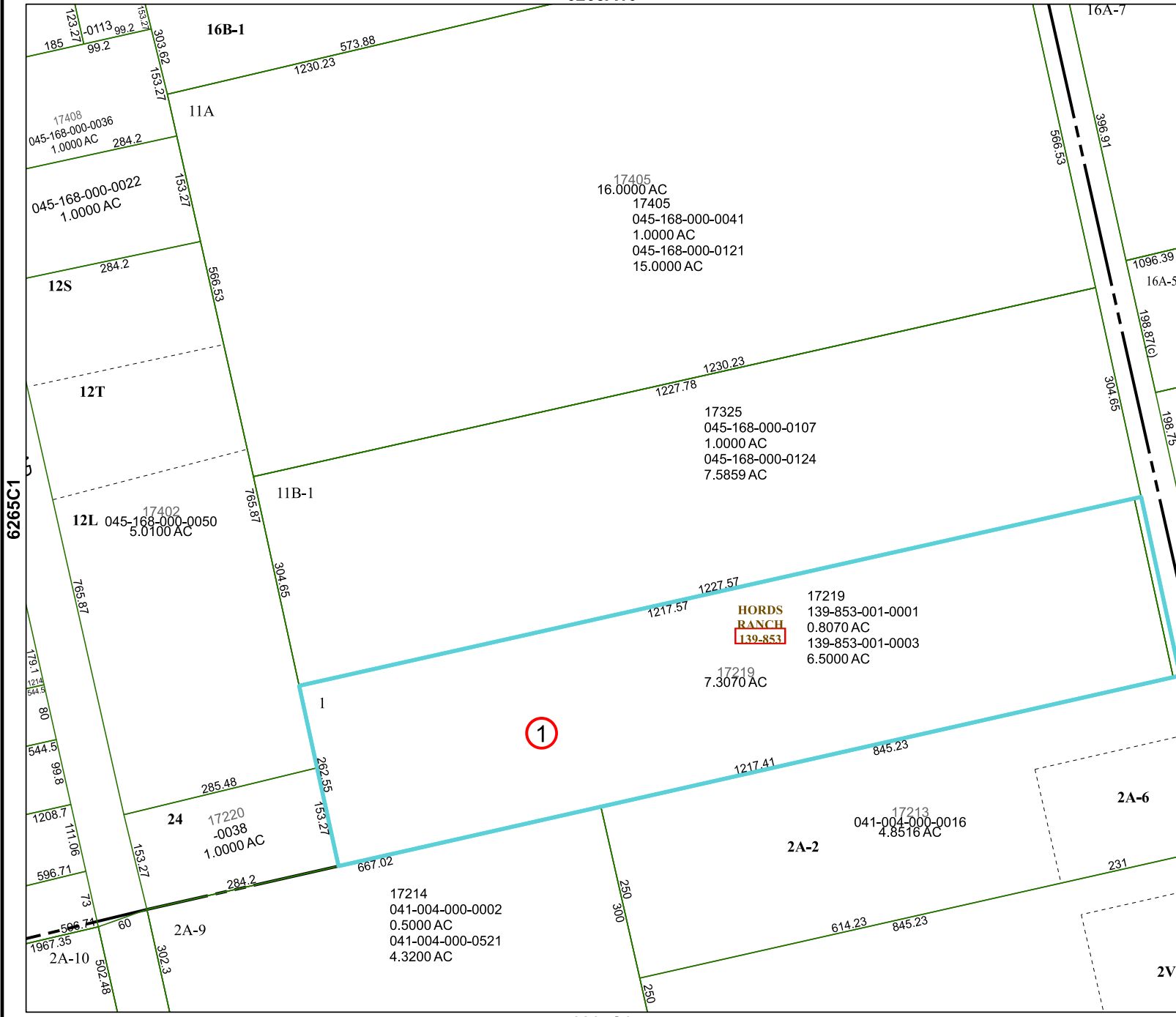
# FACET 6265C2

12	9	10	11	12
4	1	2	3	4
8	5	6	7	8

6265C6

6265C3

2V



6265C1

2A-10

16B-1

11A

12S

12T

12L

11B-1

1

24

2A-2

2A-9

2A-6