

6266B7

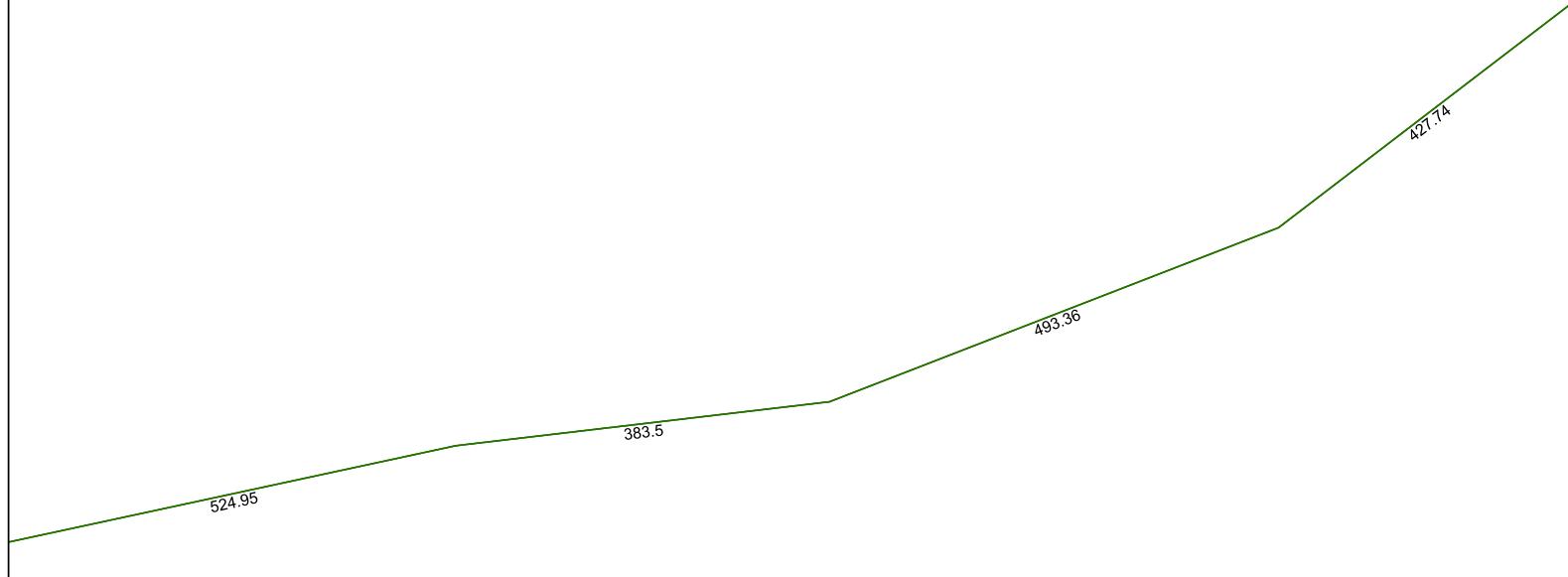
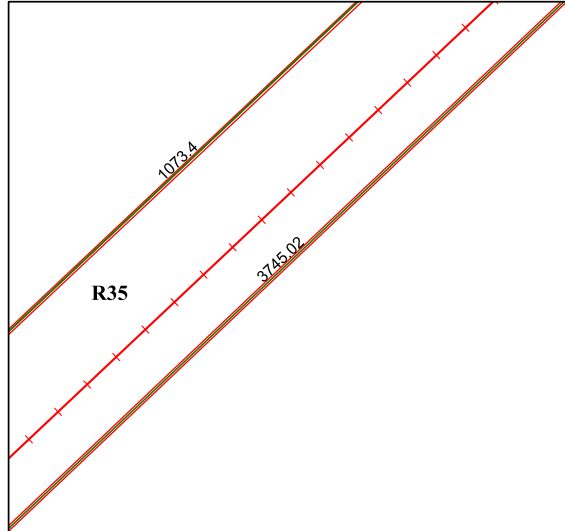
U. S. HWY. 90

1073.4

3745.02

R35

6266B10



6266D3

Harris Central Appraisal District



0 45 90 180 Feet

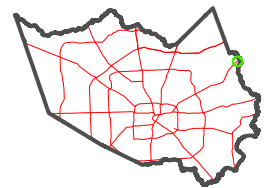
PUBLICATION DATE:
2/28/2024

Geospatial or map data maintained by the Harris Central Appraisal District is for informational purposes and may **not** have been prepared for or be suitable for legal, engineering, or surveying purposes. It does **not** represent an on-the-ground survey and only represents the approximate location of property boundaries.



6266B12

MAP LOCATION



FACET 6266B11

5	6	7	8	5
9	10	11	12	9
1	2	3	4	1