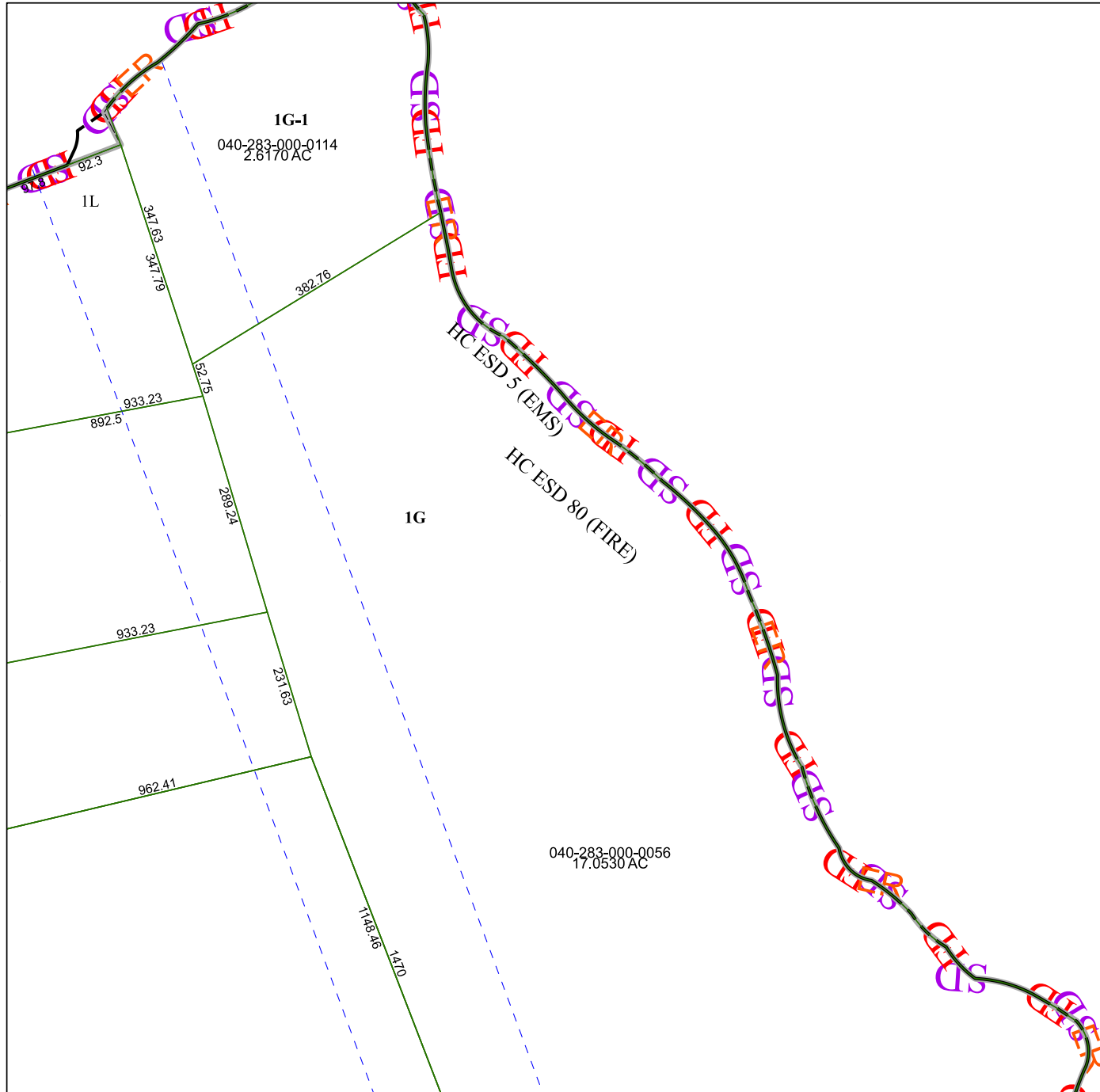


6267B7

6267B10

6267D3



Harris Central Appraisal District



0 45 90 180 Feet

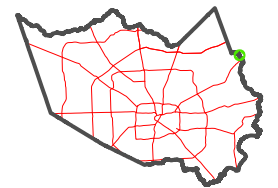
PUBLICATION DATE:
2/28/2024

Geospatial or map data maintained by the Harris Central Appraisal District is for informational purposes and may **not** have been prepared for or be suitable for legal, engineering, or surveying purposes. It does **not** represent an on-the-ground survey and only represents the approximate location of property boundaries.



6267B12

MAP LOCATION



FACET 6267B11

5	6	7	8	
9	10	11	12	
1	2	3	4	1