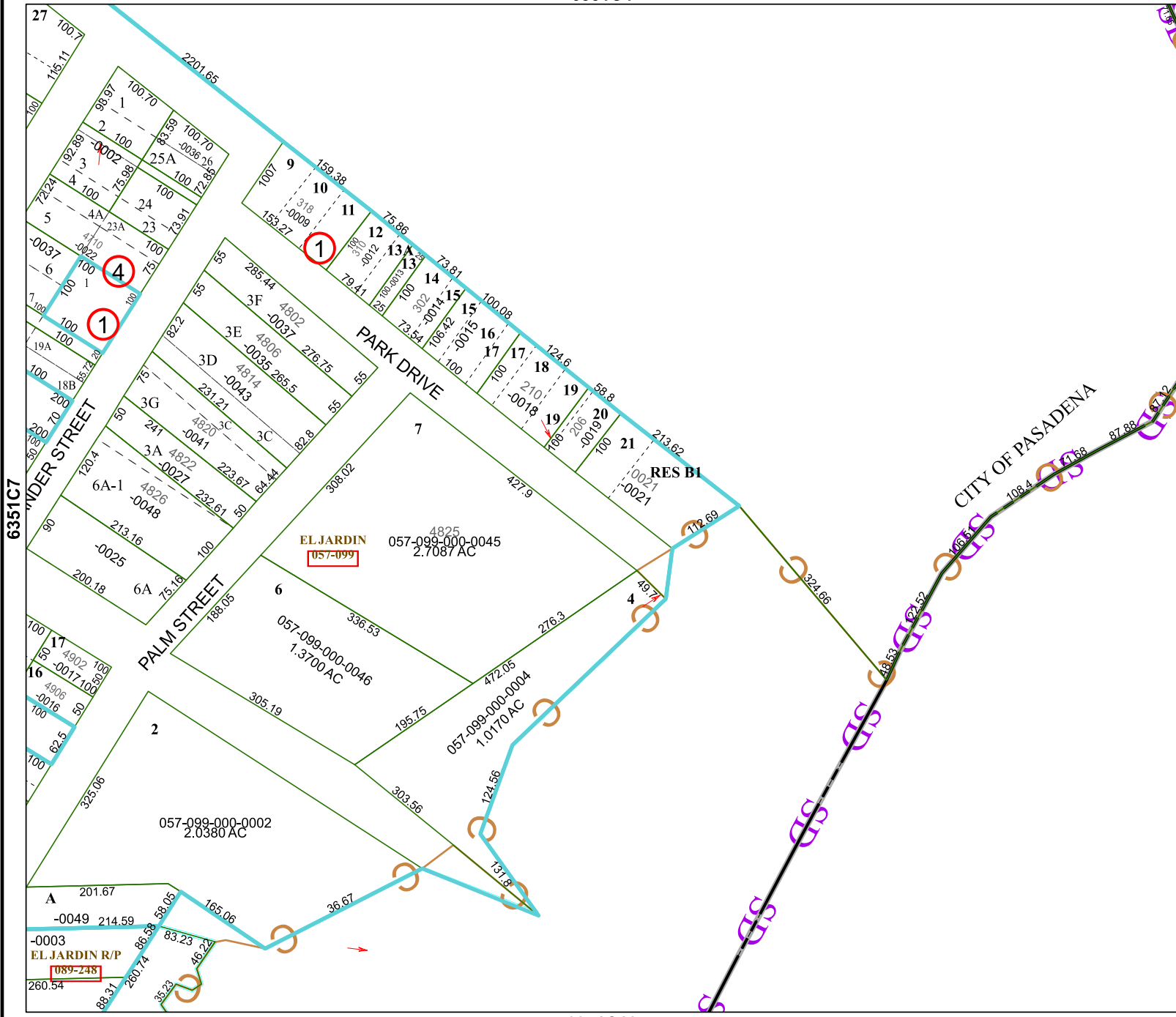


6351C4



6351C7

6351C12

Harris Central Appraisal District



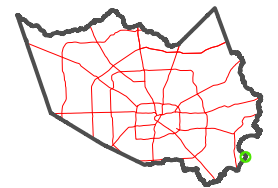
0 45 90 180 Feet

PUBLICATION DATE:
2/13/2024

Geospatial or map data maintained by the Harris Central Appraisal District is for informational purposes and may not have been prepared for or be suitable for legal, engineering, or surveying purposes. It does not represent an on-the-ground survey and only represents the approximate location of property boundaries.



MAP LOCATION



FACET

6351C8

2	3	4	1	2
6	7	8	5	6
10	11	12	9	10

6351D5