

Harris Central Appraisal District

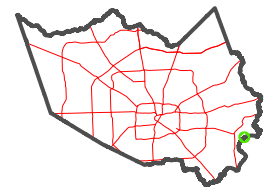


0 45 90 180 Feet

PUBLICATION DATE:
12/30/2023

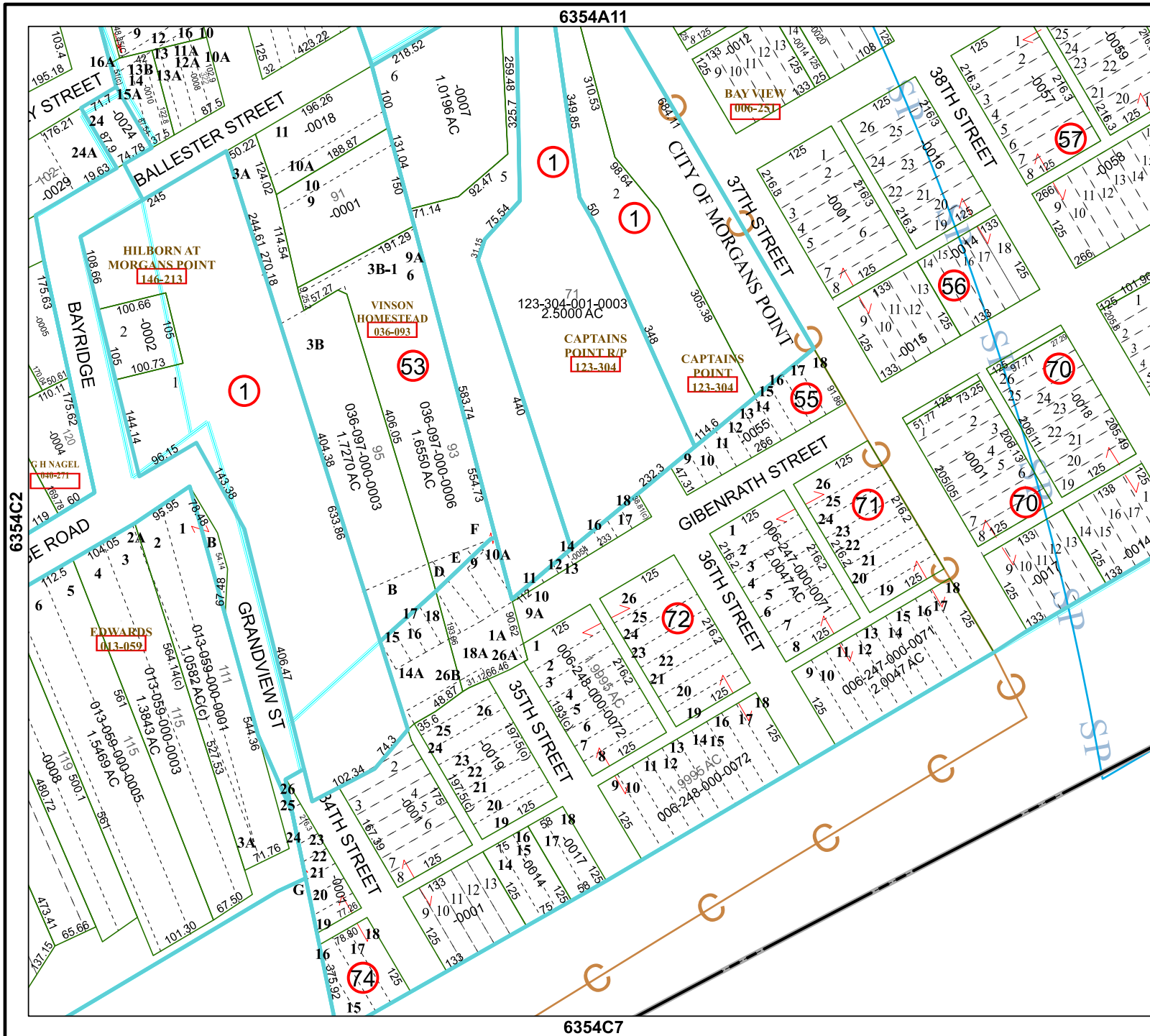
Geospatial or map data maintained by the Harris Central Appraisal District is for informational purposes and may not have been prepared for or be suitable for legal, engineering, or surveying purposes. It does not represent an on-the-ground survey and only represents the approximate location of property boundaries.

MAP LOCATION



FACET 6354C3

9	10	11	12	9
1	2	3	4	
5	6	7	8	



6354A11

6354C7

6354C2

6354C4

HILBORN AT MORGANS POINT
146-213

VINSON HOMESTEAD
036-093

CAPTAINS POINT R/P
123-304

CAPTAINS POINT
123-304

EDWARDS
013-059

BAY VIEW
006-251

1

1

1

53

55

56

57

70

70

72

71

74