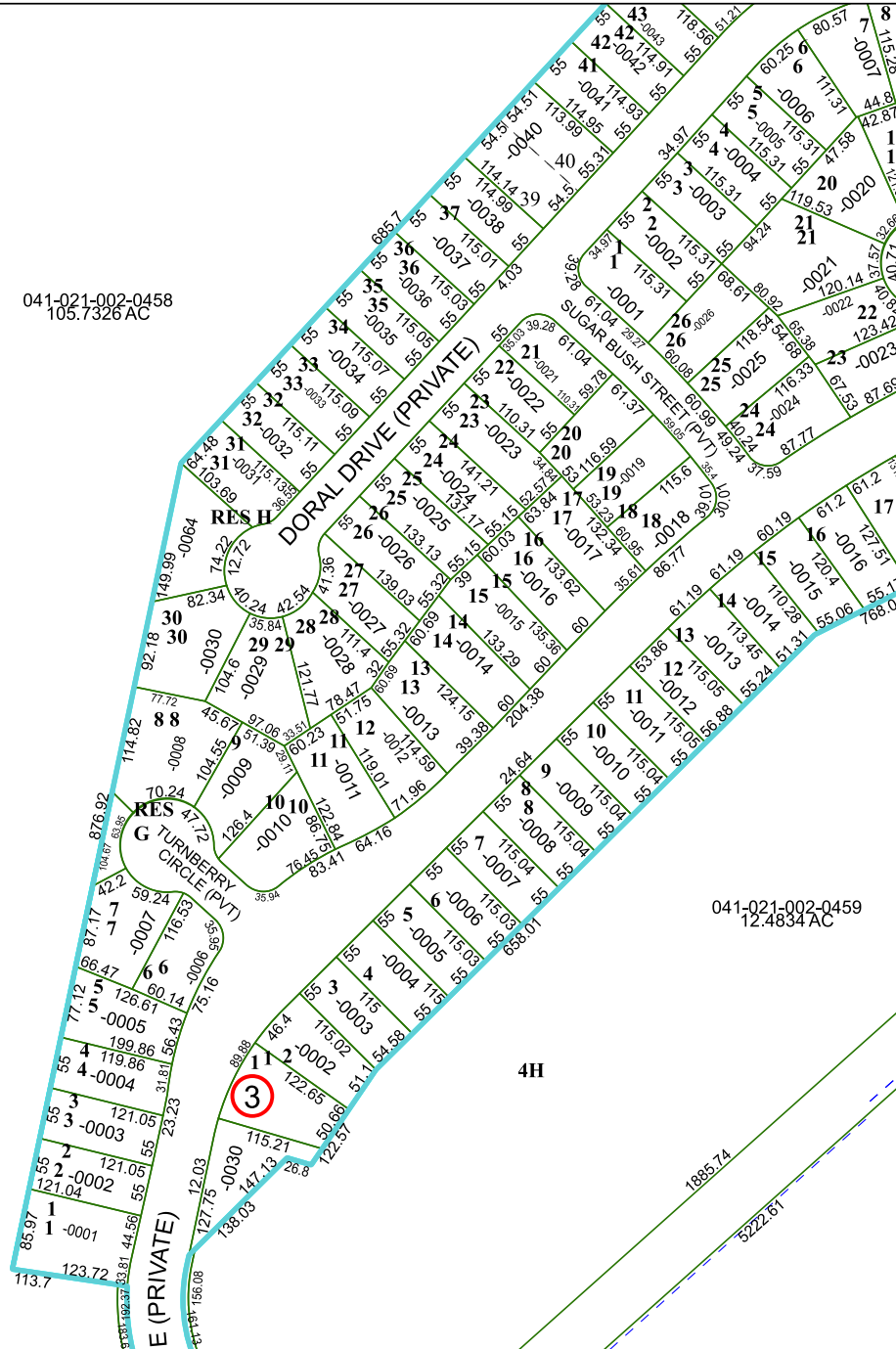


6356D12

4G-2

041-021-002-0458
105.7326 AC

6355B3



041-021-002-0459
12.4834 AC

4H

6355B8

Harris Central Appraisal District



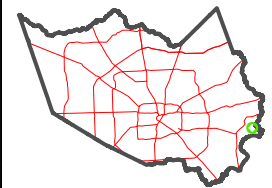
0 45 90 180 Feet

PUBLICATION DATE:
1/4/2023

Geospatial or map data maintained by the Harris Central Appraisal District is for informational purposes and may not have been prepared for or be suitable for legal, engineering, or surveying purposes. It does not represent an on-the-ground survey and only represents the approximate location of property boundaries.



MAP LOCATION



FACET 6355B4

10	11	12	9	10
2	3	4	1	2
6	7	8	5	6