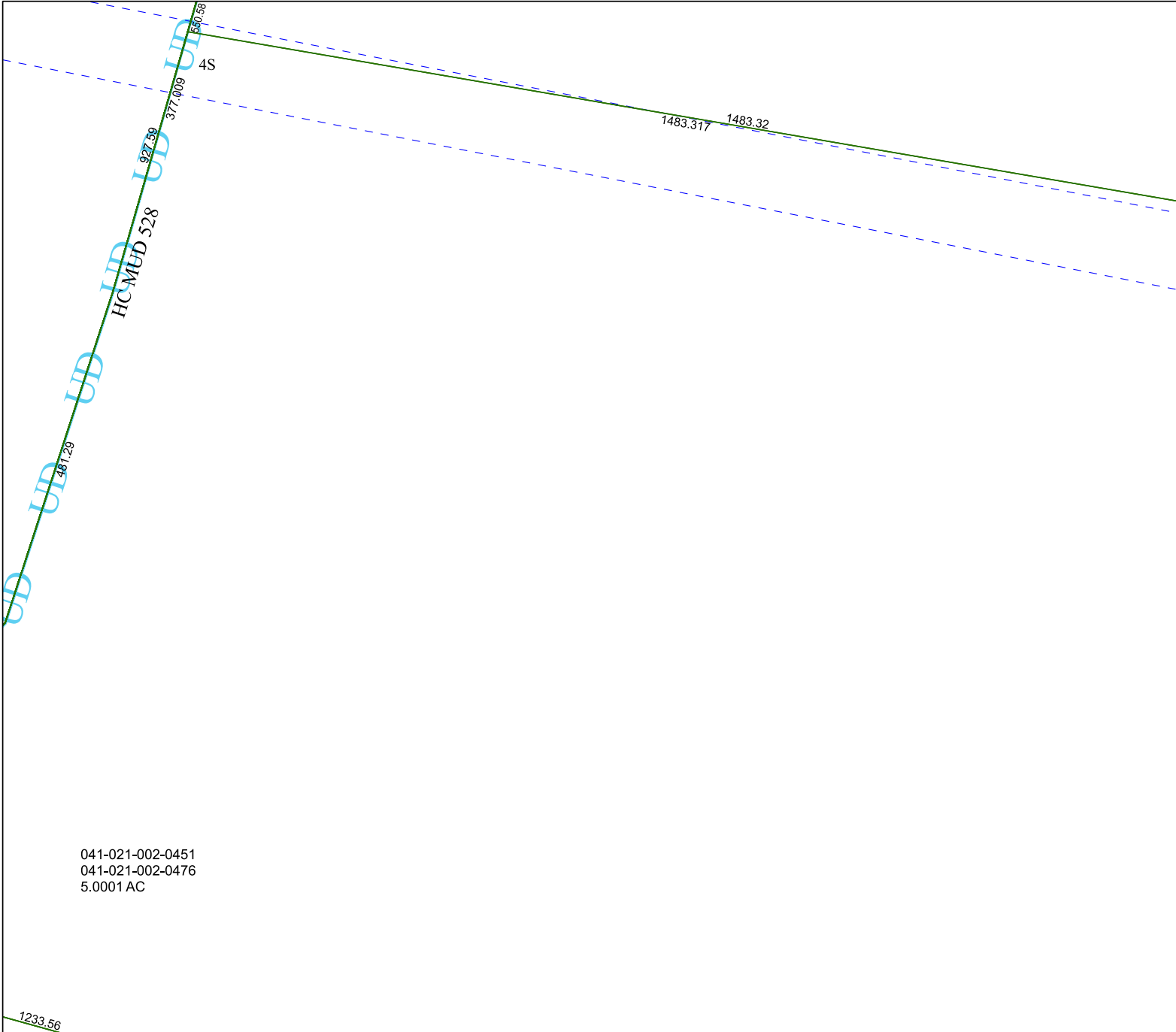


6356D6

6356D9



041-021-002-0451  
 041-021-002-0476  
 5.0001 AC

6355B2

# Harris Central Appraisal District



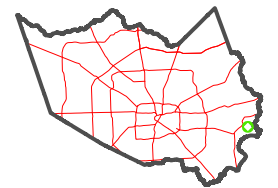
0 45 90 180  
 Feet

PUBLICATION DATE:  
 1/29/2024

Geospatial or map data maintained by the Harris Central Appraisal District is for informational purposes and may **not** have been prepared for or be suitable for legal, engineering, or surveying purposes. It does **not** represent an on-the-ground survey and only represents the approximate location of property boundaries.



### MAP LOCATION



## FACET 6356D10

8	5	6	7	8
12	9	10	11	12
4	1	2	3	4

6356D11