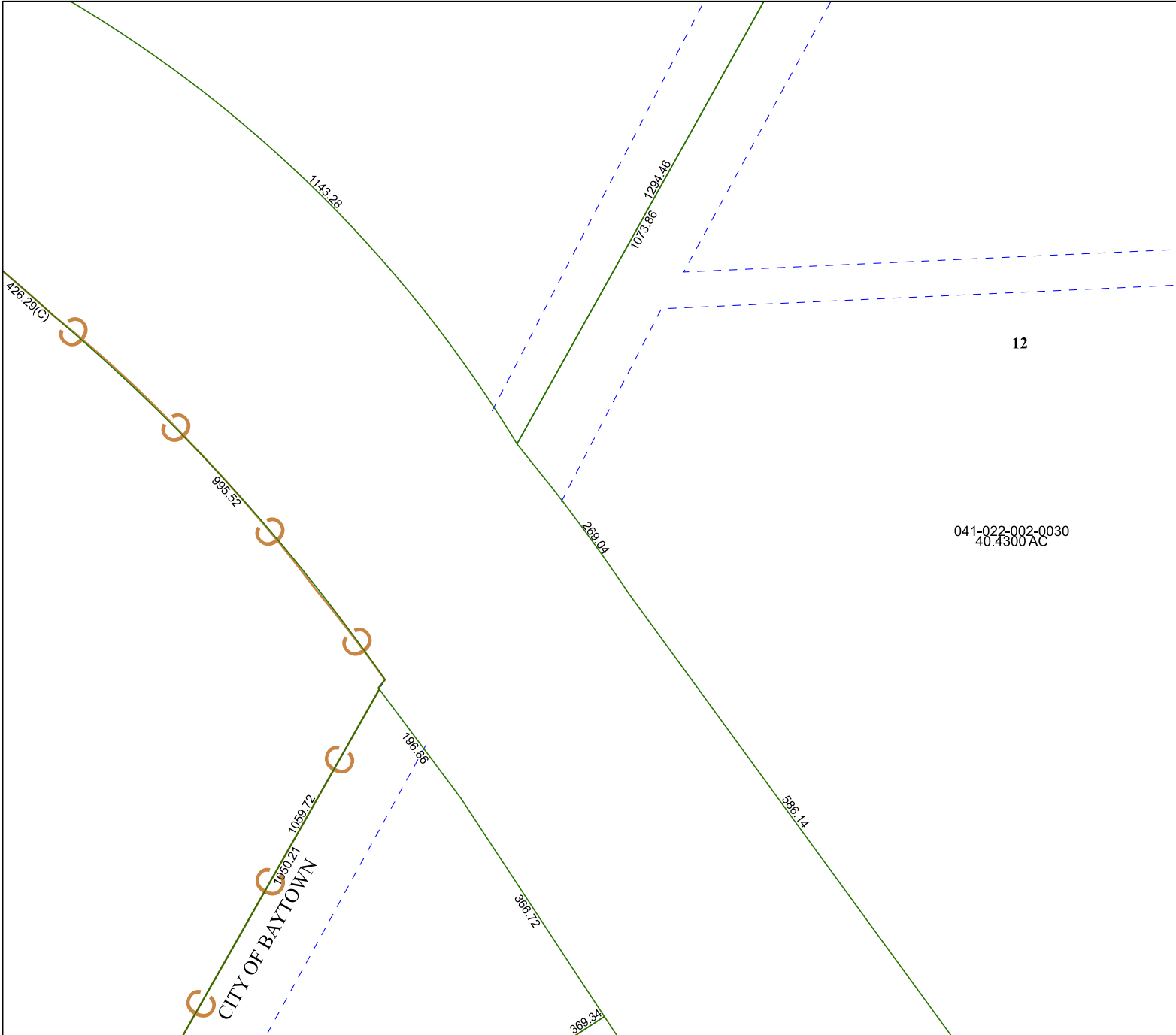


6357A2

6357A5

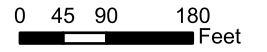
6357A10



041-022-002-0030
40.4300 AC

12

Harris Central Appraisal District



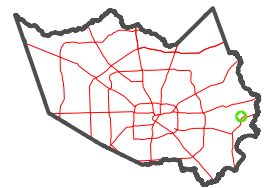
PUBLICATION DATE:
2/13/2023

Geospatial or map data maintained by the Harris Central Appraisal District is for informational purposes and may **not** have been prepared for or be suitable for legal, engineering, or surveying purposes. It does **not** represent an on-the-ground survey and only represents the approximate location of property boundaries.



6357A7

MAP LOCATION



FACET

6357A6

4	1	2	3	4
8	5	6	7	8
12	9	10	11	12