

Harris Central Appraisal District

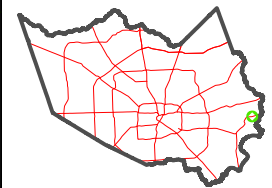


0 45 90 180 Feet

PUBLICATION DATE:
12/30/2023

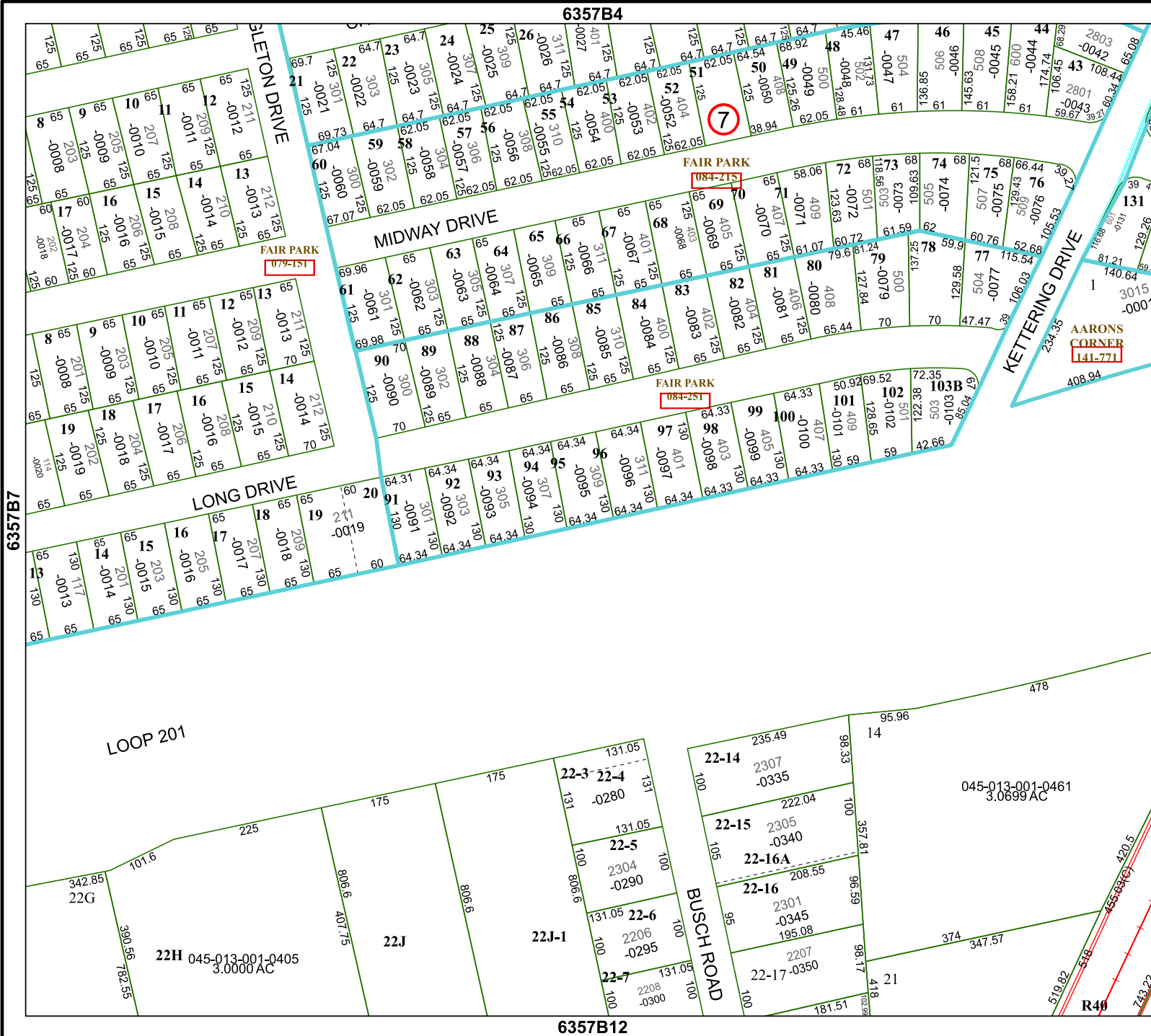
Geospatial or map data maintained by the Harris Central Appraisal District is for informational purposes and may not have been prepared for or be suitable for legal, engineering, or surveying purposes. It does not represent an on-the-ground survey and only represents the approximate location of property boundaries.

MAP LOCATION



FACET 6357B8

2	3	4	5	6
6	7	8	9	10



6357B4

6357B12

6357B7

6457A5

7

FAIR PARK
079-151

FAIR PARK
084-215

FAIR PARK
084-251

AARONS
CORNER
141-771

LOOP 201

BUSCH ROAD

KETTERING DRIVE

SILETON DRIVE

MIDWAY DRIVE

LONG DRIVE

22H 045-013-001-0405
3.0000 AC

045-013-001-0461
3.0899 AC

R40