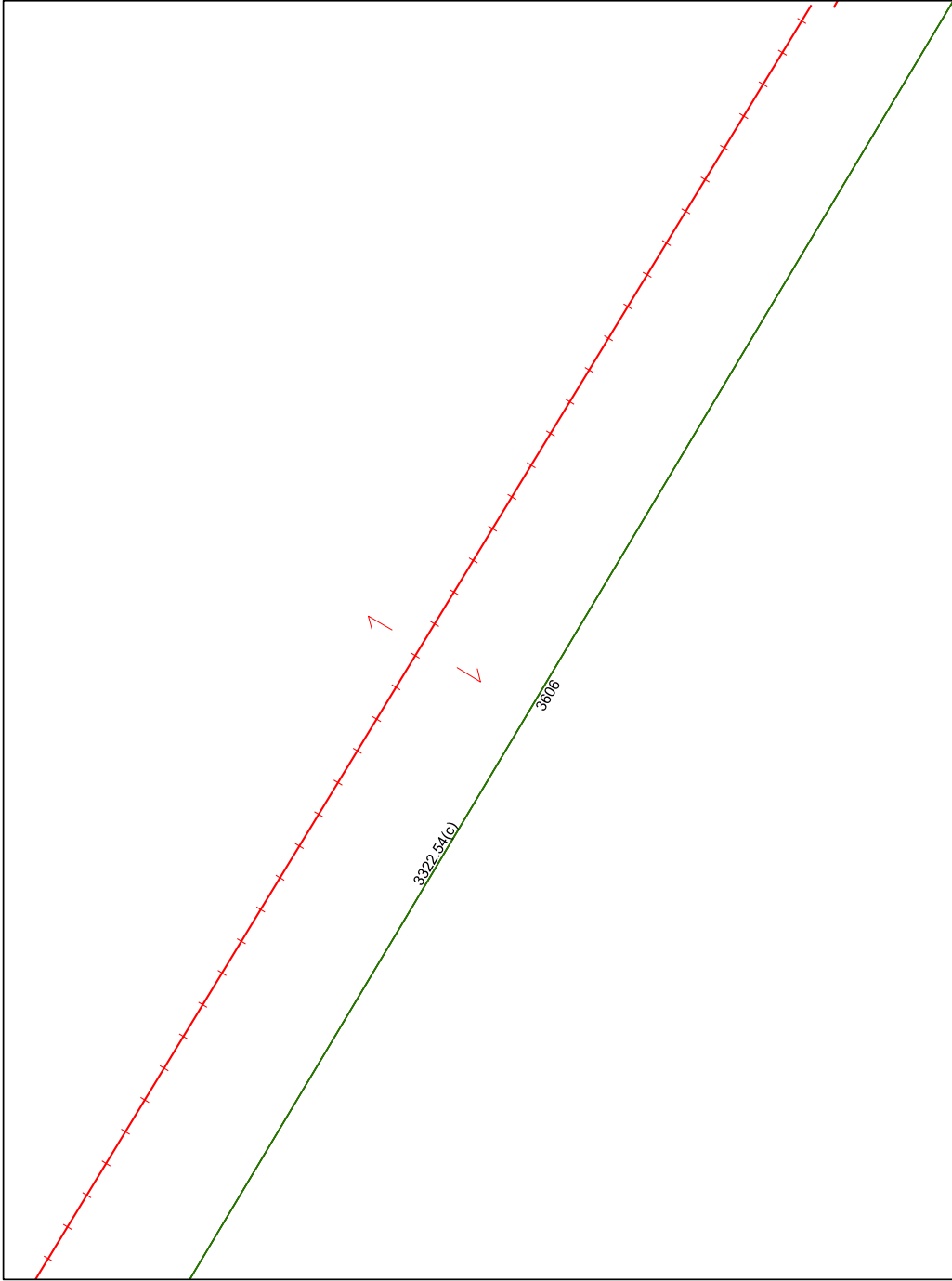


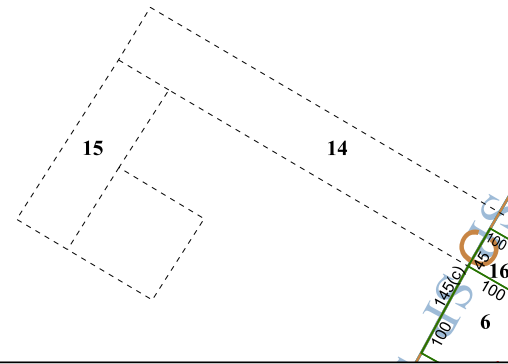
6357A9

6257D4

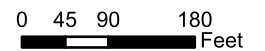


1

041-022-010-0017
98.3550 AC



Harris Central Appraisal District



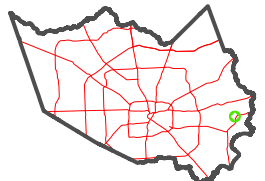
PUBLICATION DATE:
2/13/2023

Geospatial or map data maintained by the Harris Central Appraisal District is for informational purposes and may **not** have been prepared for or be suitable for legal, engineering, or surveying purposes. It does **not** represent an on-the-ground survey and only represents the approximate location of property boundaries.



6357C2

MAP LOCATION



FACET 6357C1

11	12	9	10	11
3	4	1	2	3
7	8	5	6	7

6357C5

100
145(C)
15
16
100
100
6