

Harris Central Appraisal District

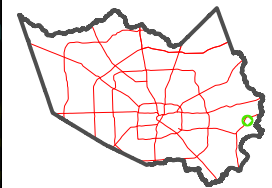


0 45 90 180 Feet

PUBLICATION DATE:
4/22/2024

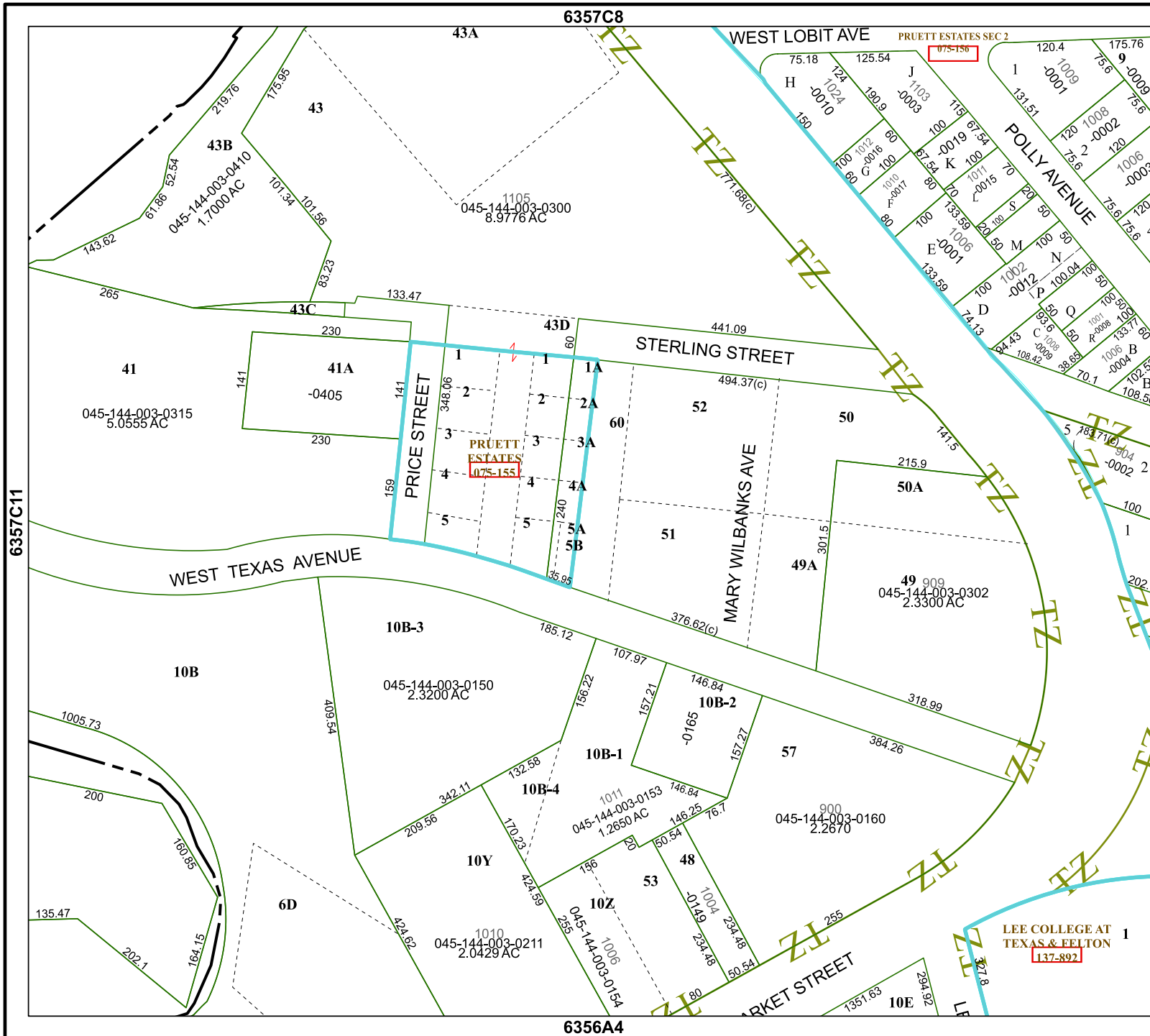
Geospatial or map data maintained by the Harris Central Appraisal District is for informational purposes and may not have been prepared for or be suitable for legal, engineering, or surveying purposes. It does not represent an on-the-ground survey and only represents the approximate location of property boundaries.

MAP LOCATION



FACET 6357C12

6	7	8	5	6
10	11	12	9	10
2	3	4	1	2



LEE COLLEGE AT
TEXAS & FELTON
137-892

6356A4

6357C11

6357D9

6357C8

6357D8