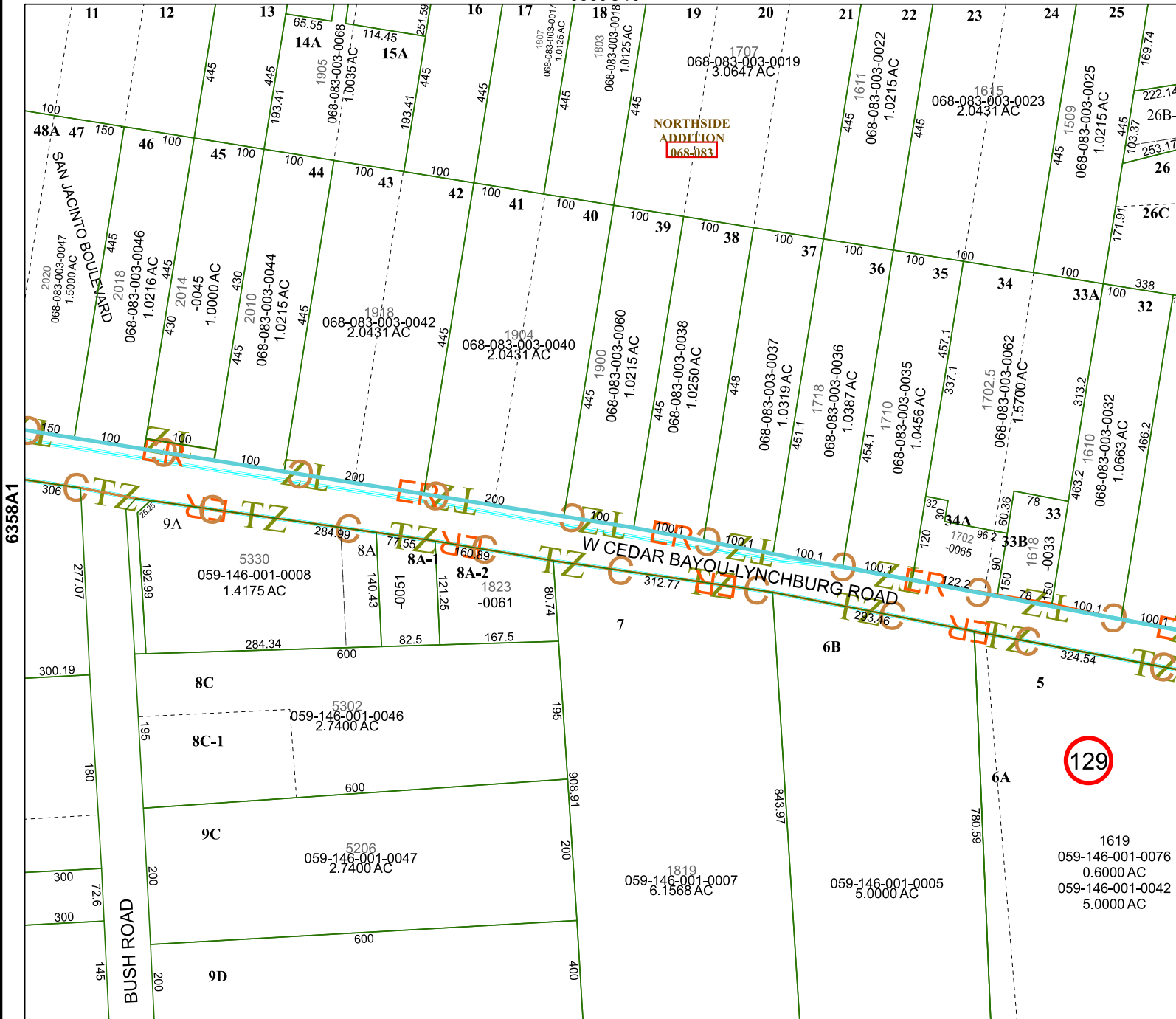


6359C10



6358A6

# Harris Central Appraisal District



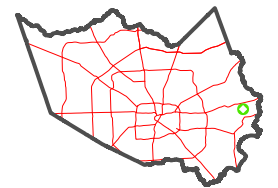
0 45 90 180 Feet

PUBLICATION DATE:  
2/27/2023

Geospatial or map data maintained by the Harris Central Appraisal District is for informational purposes and may not have been prepared for or be suitable for legal, engineering, or surveying purposes. It does not represent an on-the-ground survey and only represents the approximate location of property boundaries.



MAP LOCATION



129

## FACET 6358A2

1619  
059-146-001-0076  
0.6000 AC  
059-146-001-0042  
5.0000 AC

12	9	10	11	12
4	1	2	3	4
8	5	6	7	8