

# Harris Central Appraisal District

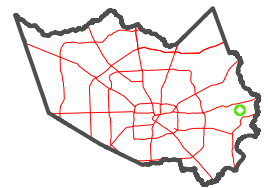


0 45 90 180 Feet

PUBLICATION DATE:  
12/30/2023

Geospatial or map data maintained by the Harris Central Appraisal District is for informational purposes and may not have been prepared for or be suitable for legal, engineering, or surveying purposes. It does not represent an on-the-ground survey and only represents the approximate location of property boundaries.

MAP LOCATION



## FACET 6358A5

3	4	1	2	3
7	8	5	6	7
11	12	9	10	11

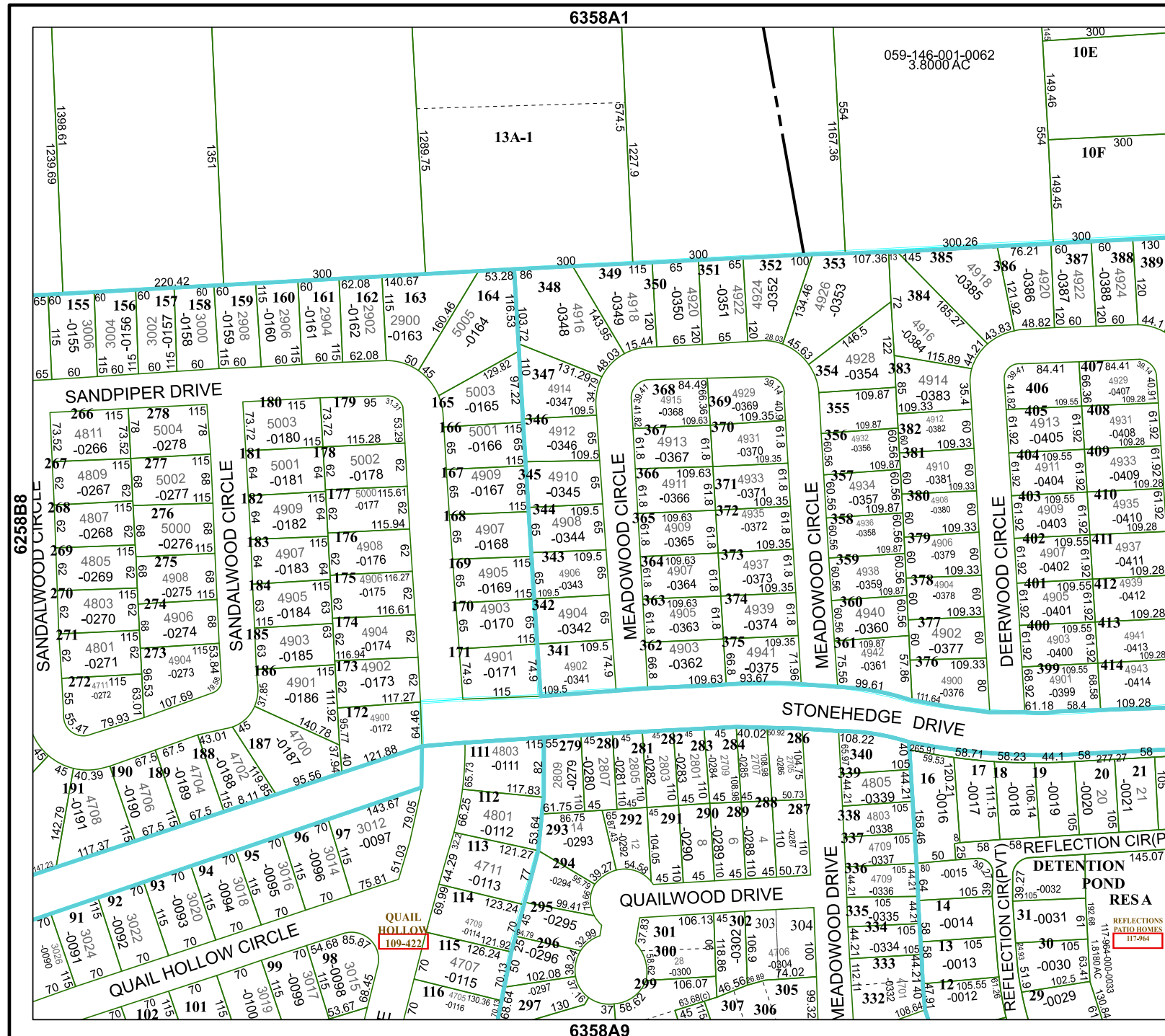
6358A1

059-146-001-0062  
3.8000 AC

10E

10F

13A-1



6358A9

REFLECTIONS PATROL HOMES  
117-264  
117-984-000-0033  
118180AC 130.84