

Harris Central Appraisal District



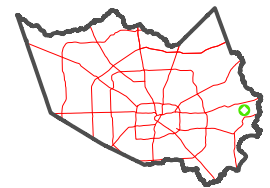
0 45 90 180 Feet

PUBLICATION DATE:
2/13/2023

Geospatial or map data maintained by the Harris Central Appraisal District is for informational purposes and may not have been prepared for or be suitable for legal, engineering, or surveying purposes. It does not represent an on-the-ground survey and only represents the approximate location of property boundaries.



MAP LOCATION

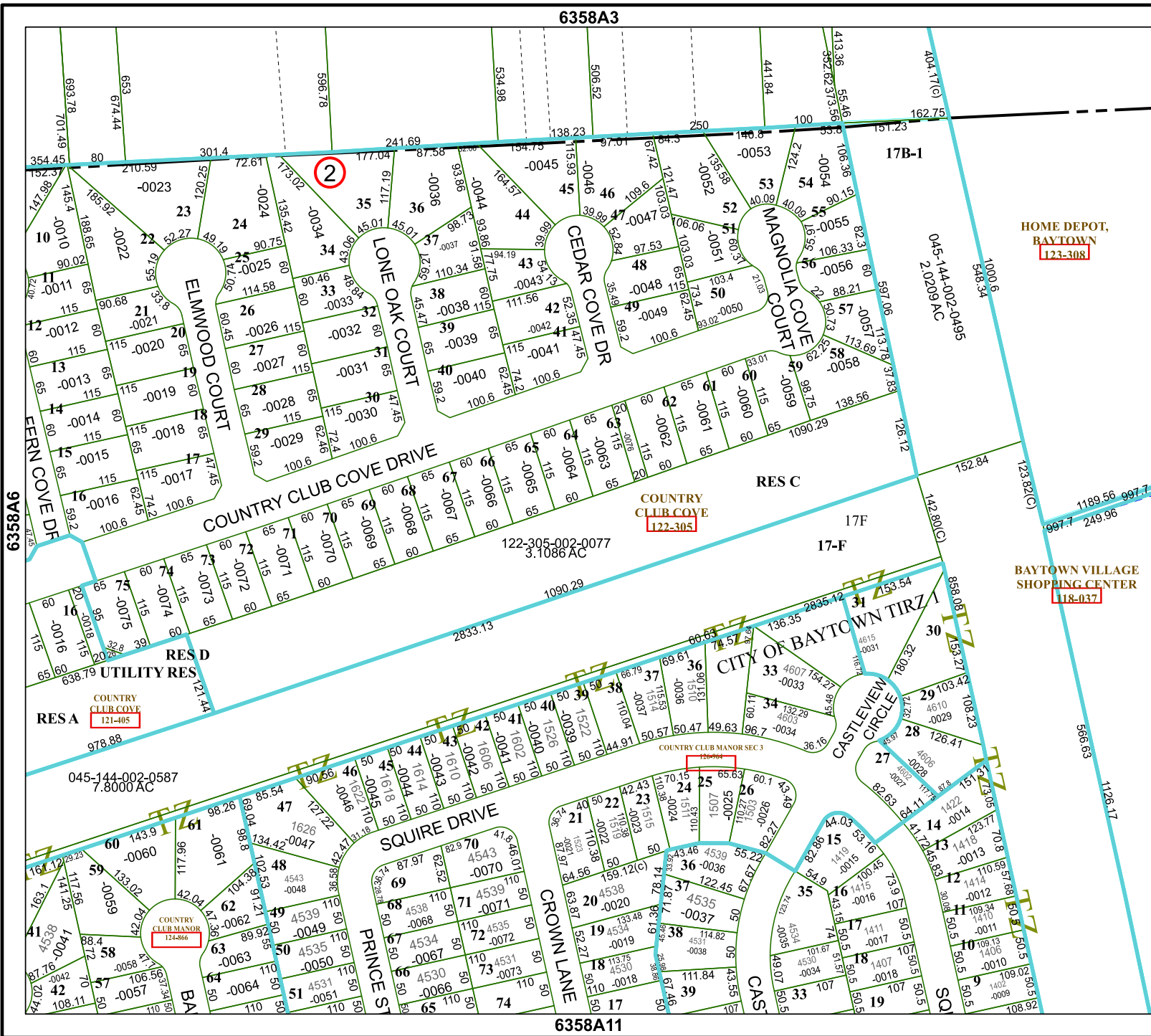


FACET 6358A7

1	2	3	4	1
5	6	7	8	5
9	10	11	12	9

6358A3

6358A11



HOME DEPOT,
BAYTOWN
123-308

BAYTOWN VILLAGE
SHOPPING CENTER
118-037

COUNTRY
CLUB COVE
122-305

COUNTRY
CLUB COVE
121-405

COUNTRY
CLUB MANOR
124-866