

6358B4

Harris Central Appraisal District

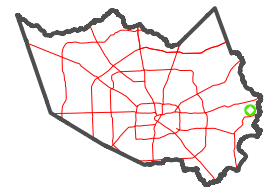


0 45 90 180 Feet

PUBLICATION DATE: 3/25/2024

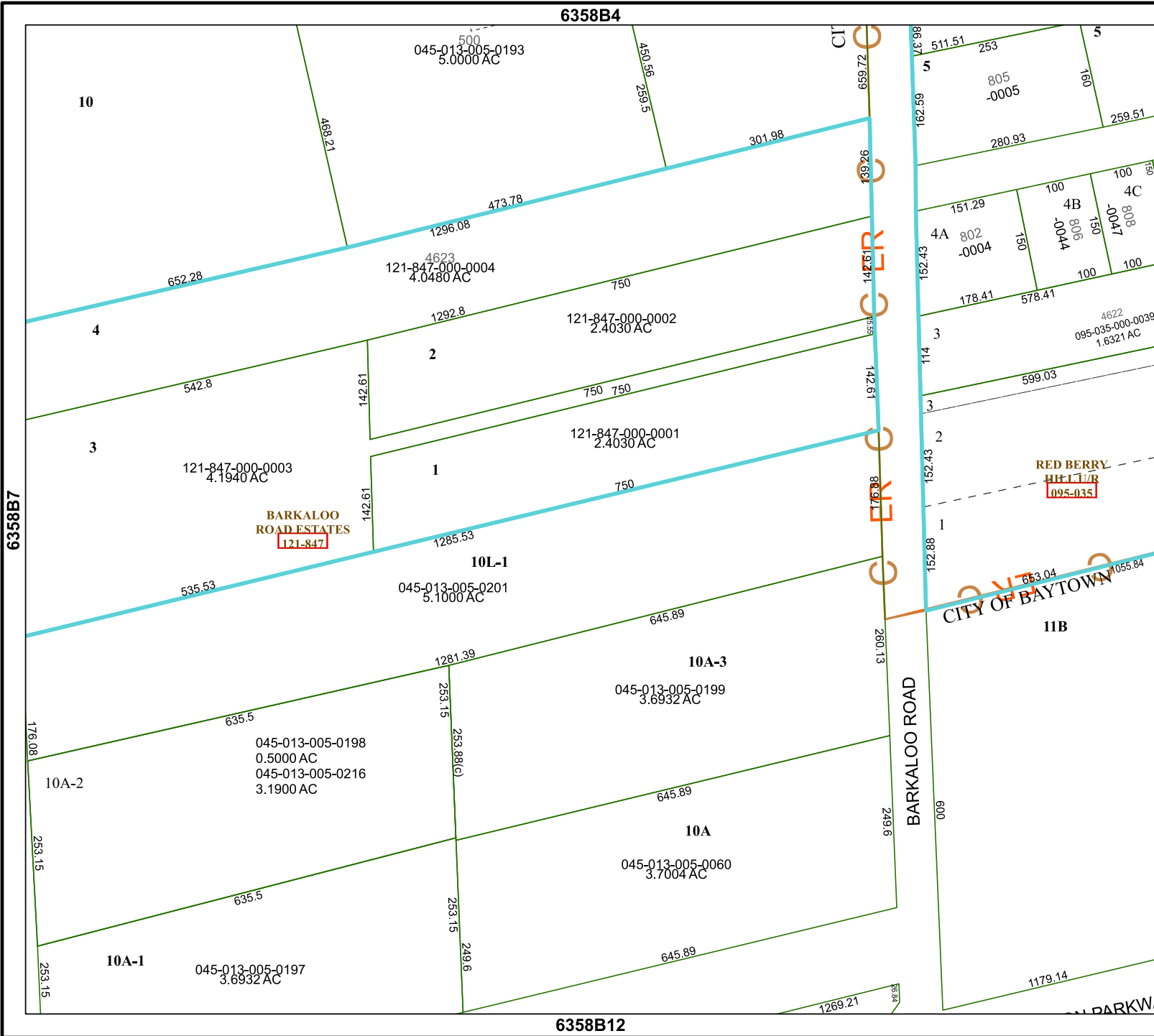
Geospatial or map data maintained by the Harris Central Appraisal District is for informational purposes and may not have been prepared for or be suitable for legal, engineering, or surveying purposes. It does not represent an on-the-ground survey and only represents the approximate location of property boundaries.

MAP LOCATION



FACET 6358B8

2	3	4	1	2
6	7	8	5	6
10	11	12	9	10



6358B12

6358B7

6458A5