

6358D8

29B

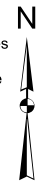
Harris Central Appraisal District



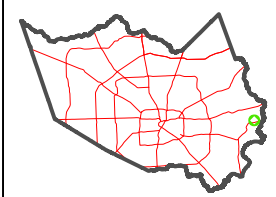
0 45 90 180 Feet

PUBLICATION DATE: 4/11/2023

Geospatial or map data maintained by the Harris Central Appraisal District is for informational purposes and may not have been prepared for or be suitable for legal, engineering, or surveying purposes. It does not represent an on-the-ground survey and only represents the approximate location of property boundaries.

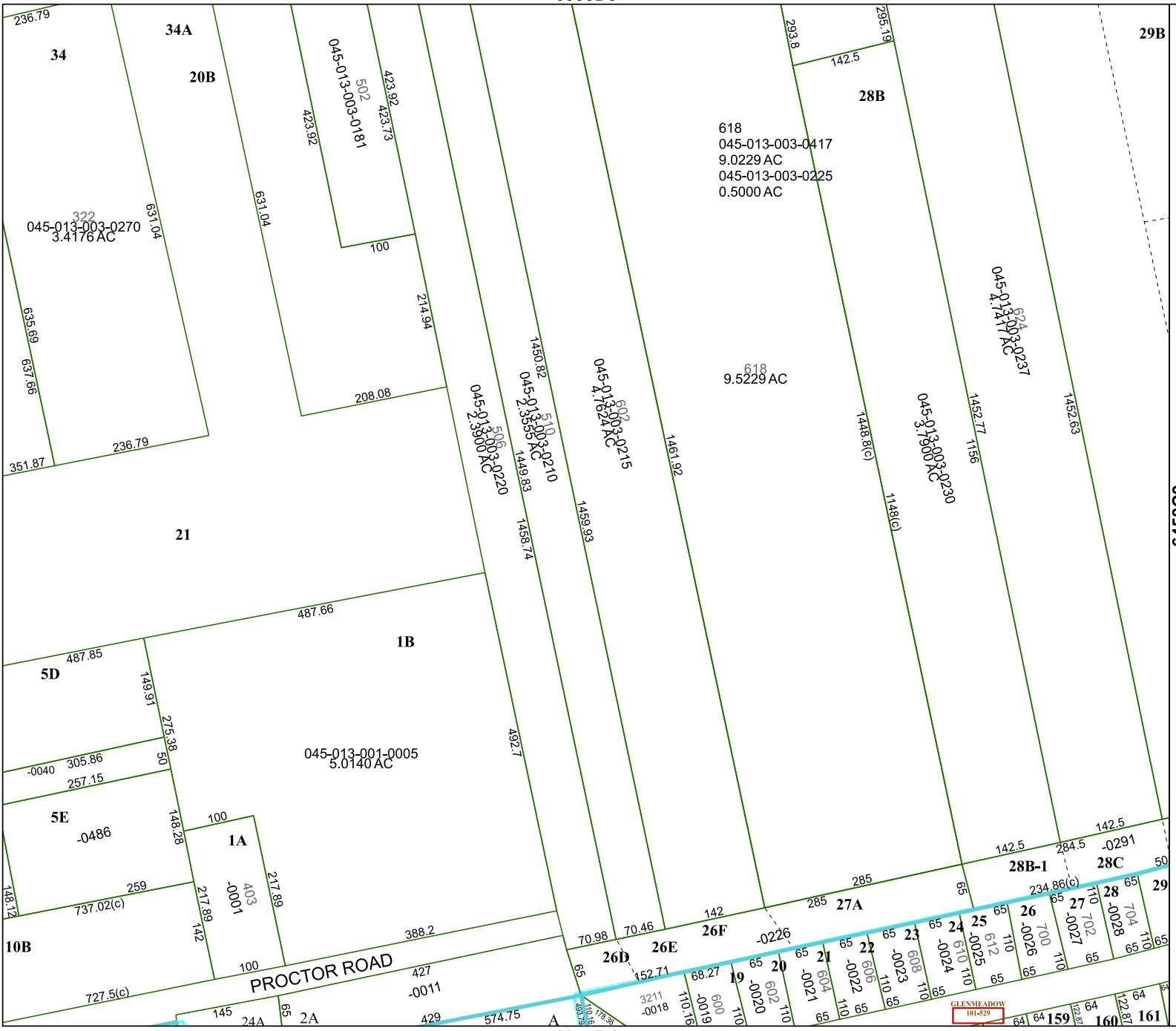


MAP LOCATION



FACET 6358D12

6	7	8	5	6
10	11	12	9	10
2	3	4	1	2



6358D11

6458C

6357B4

GLENNMEADOW 101-521