

6359A6

SAN JACINTO  
MALL 3RD R/P  
[115-028]

# Harris Central Appraisal District

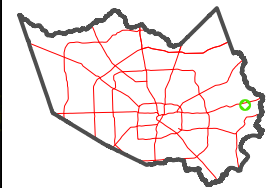


0 50 100 200  
Feet

PUBLICATION DATE:  
3/2/2026

Geospatial or map data maintained by the Harris Central Appraisal District is for informational purposes and may not have been prepared for or be suitable for legal, engineering, or surveying purposes. It does not represent an on-the-ground survey and only represents the approximate location of property boundaries.

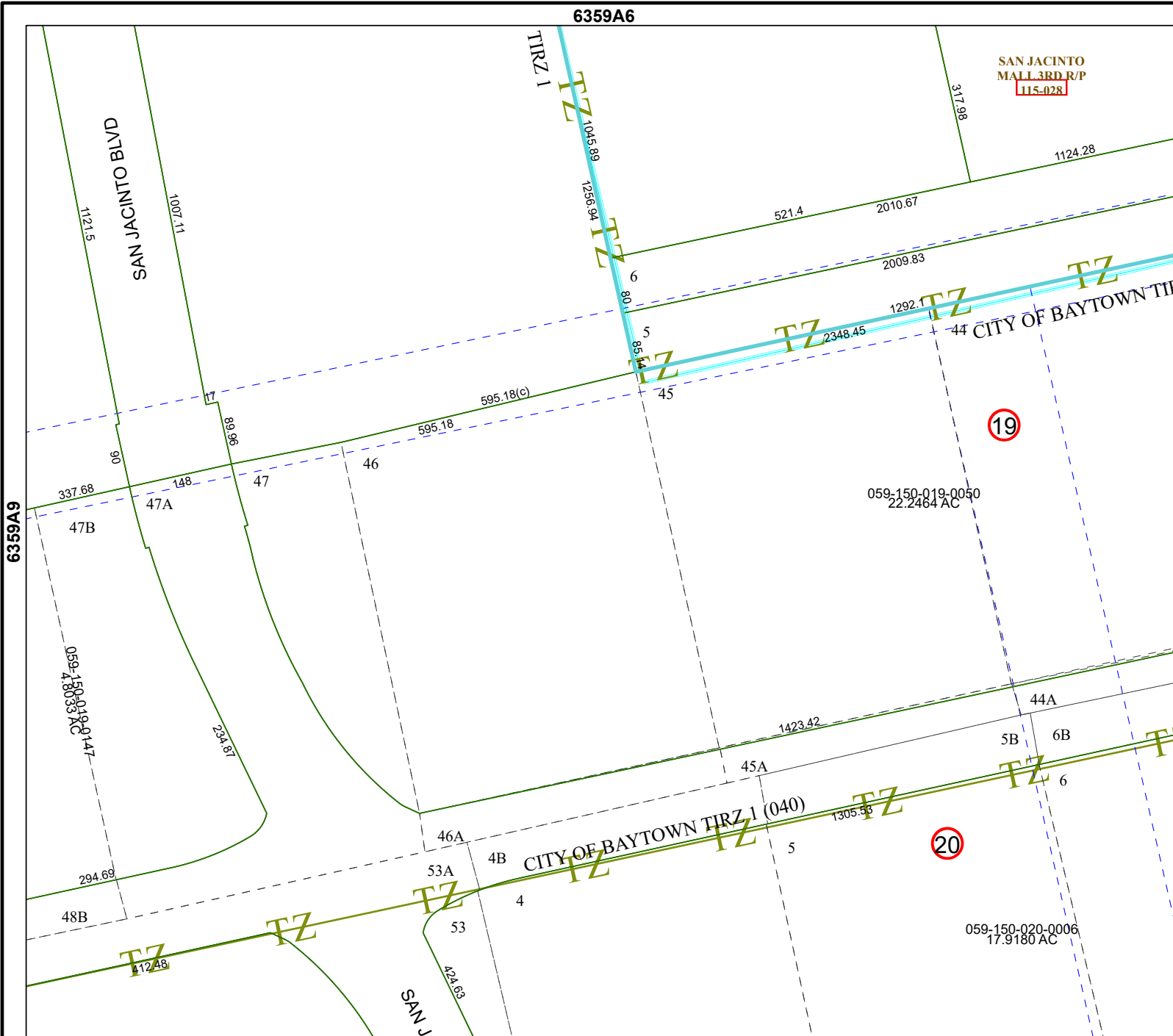
MAP LOCATION



## FACET 6359A10

8	5	6	7	8
12	9	10	11	12
4	1	2	3	4

6359C2



6359A9

6359A11