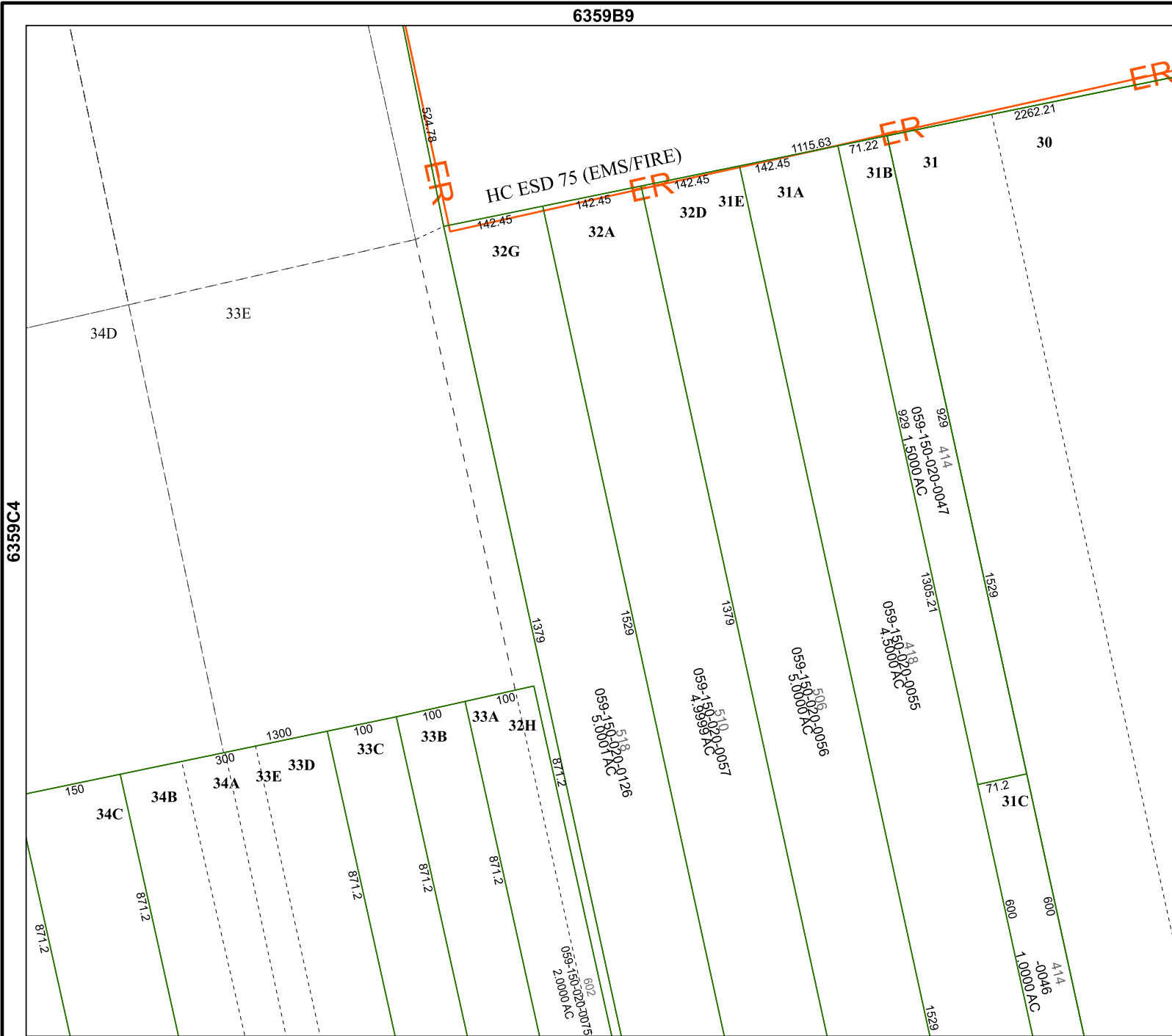


6359B9

6359D5



Harris Central Appraisal District



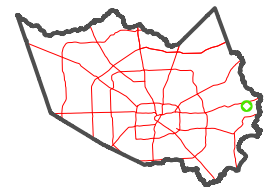
0 45 90 180 Feet

PUBLICATION DATE:
3/25/2024

Geospatial or map data maintained by the Harris Central Appraisal District is for informational purposes and may not have been prepared for or be suitable for legal, engineering, or surveying purposes. It does not represent an on-the-ground survey and only represents the approximate location of property boundaries.



MAP LOCATION



FACET 6359D1

11	12	9	10	11
3	4	1	2	3
7	8	5	6	7

6359C4

6359D2

929 414
059-150-020-0047
929 1.5000 AC

1305.21
059-150-020-0055
418 AC

5100.0056
059-150-020-0056

5100.0057
059-150-020-0057

5180.0126
059-150-020-0058

602
059-150-020-0075
2.0000 AC

71.2
31C
600
600
411
-0046
1.0000 AC
1529