

6359D2

Harris Central Appraisal District



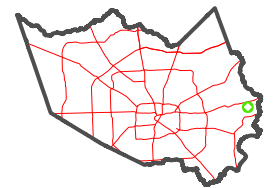
0 45 90 180 Feet

PUBLICATION DATE: 4/8/2024

Geospatial or map data maintained by the Harris Central Appraisal District is for informational purposes and may not have been prepared for or be suitable for legal, engineering, or surveying purposes. It does not represent an on-the-ground survey and only represents the approximate location of property boundaries.



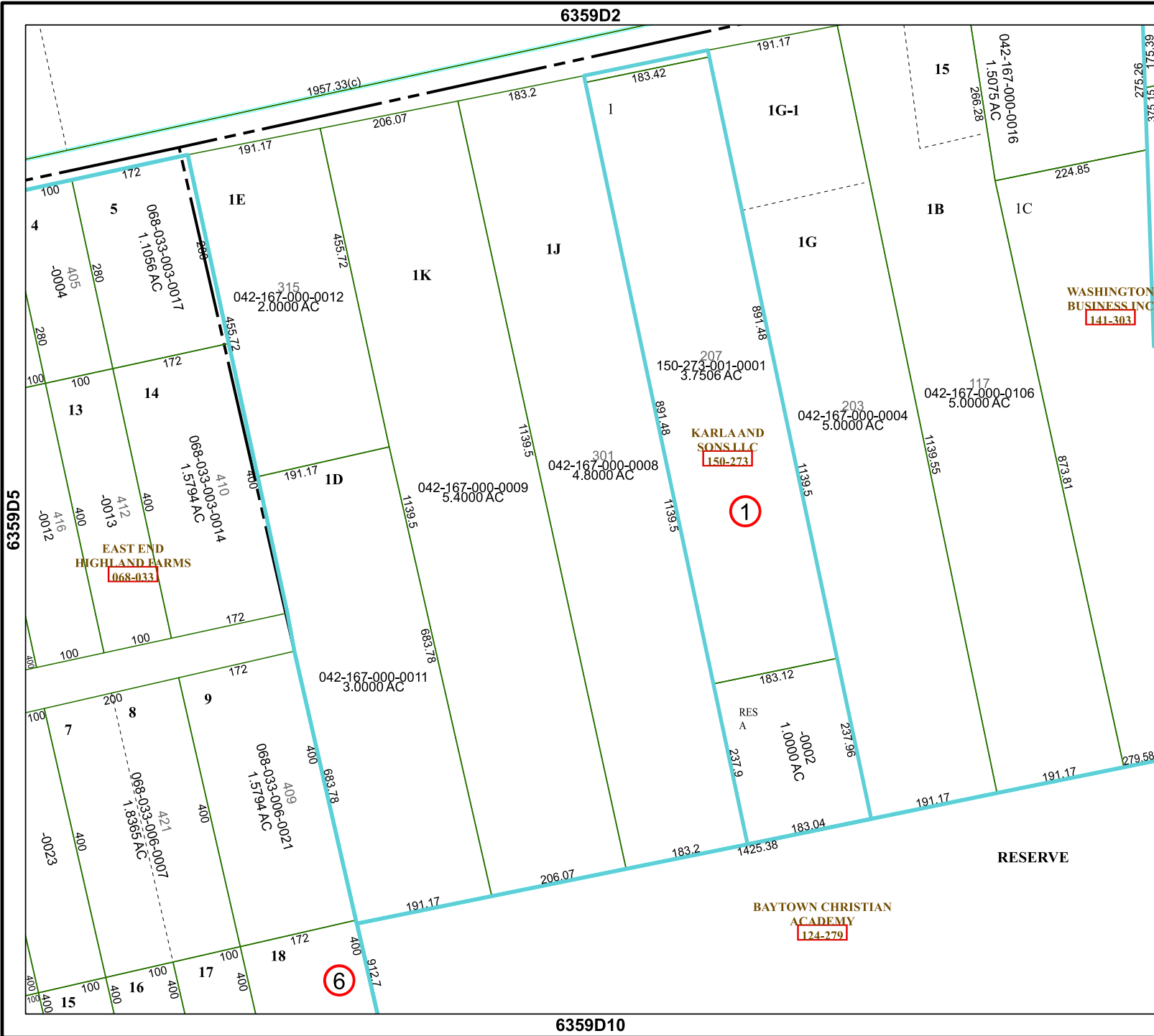
MAP LOCATION



FACET 6359D6

4	1	2	3	4
8	5	6	7	8
12	9	10	11	12

6359D10



WASHINGTON BUSINESS INC 141-303

KARLAAND SONS LLC 150-273

EAST END HIGHLAND FARMS 068-033

BAYTOWN CHRISTIAN ACADEMY 124-279

RESERVE

6359D5

6359D7

6

1