

# Harris Central Appraisal District



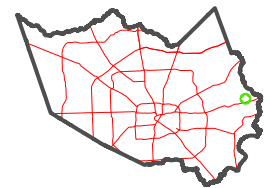
0 45 90 180 Feet

PUBLICATION DATE:  
4/22/2024

Geospatial or map data maintained by the Harris Central Appraisal District is for informational purposes and may not have been prepared for or be suitable for legal, engineering, or surveying purposes. It does not represent an on-the-ground survey and only represents the approximate location of property boundaries.

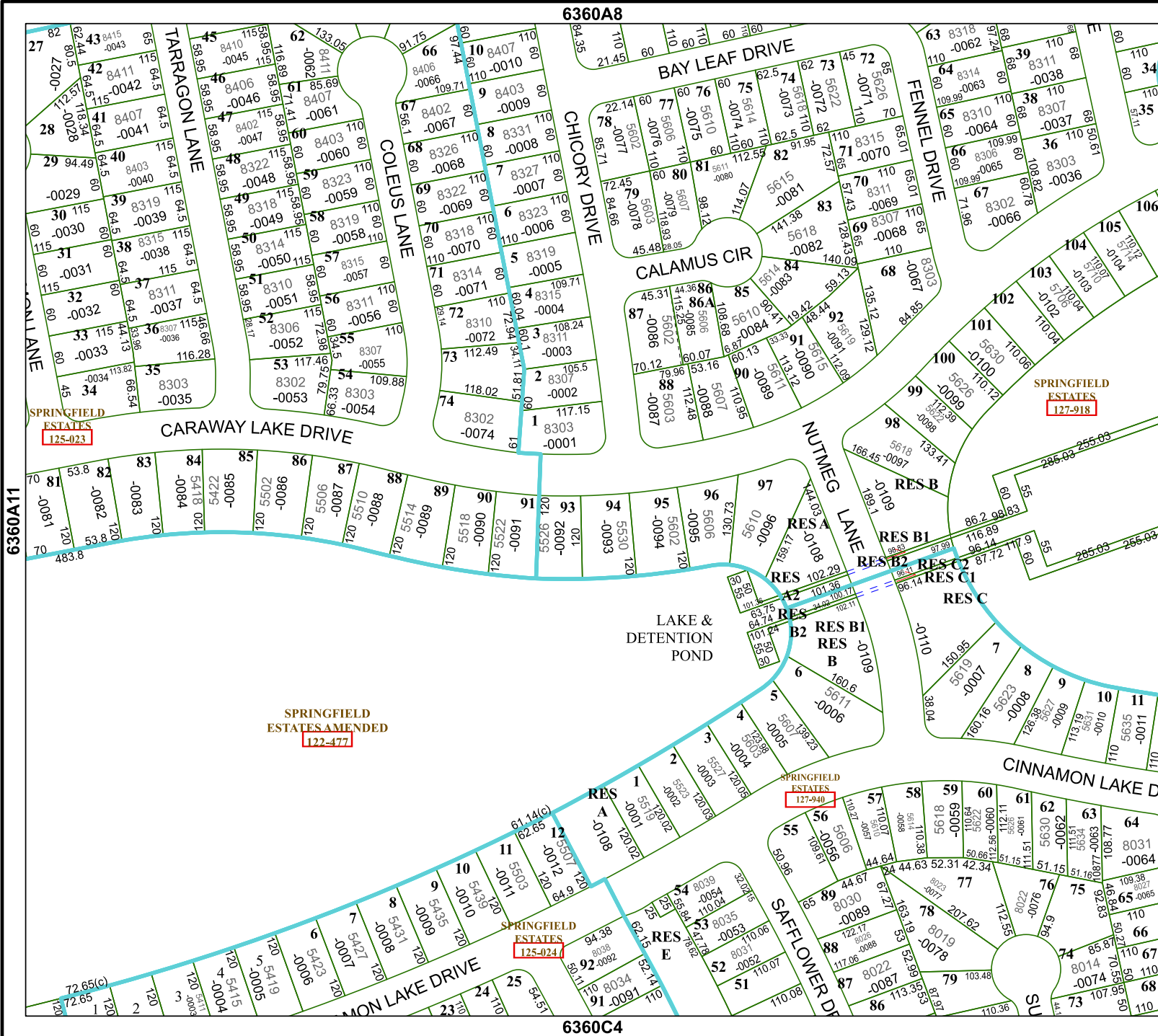


MAP LOCATION



## FACET 6360A12

6	7	8	5	6
10	11	12	9	10
2	3	4	1	2



6360A8

6360A11

6360B9

6360C4