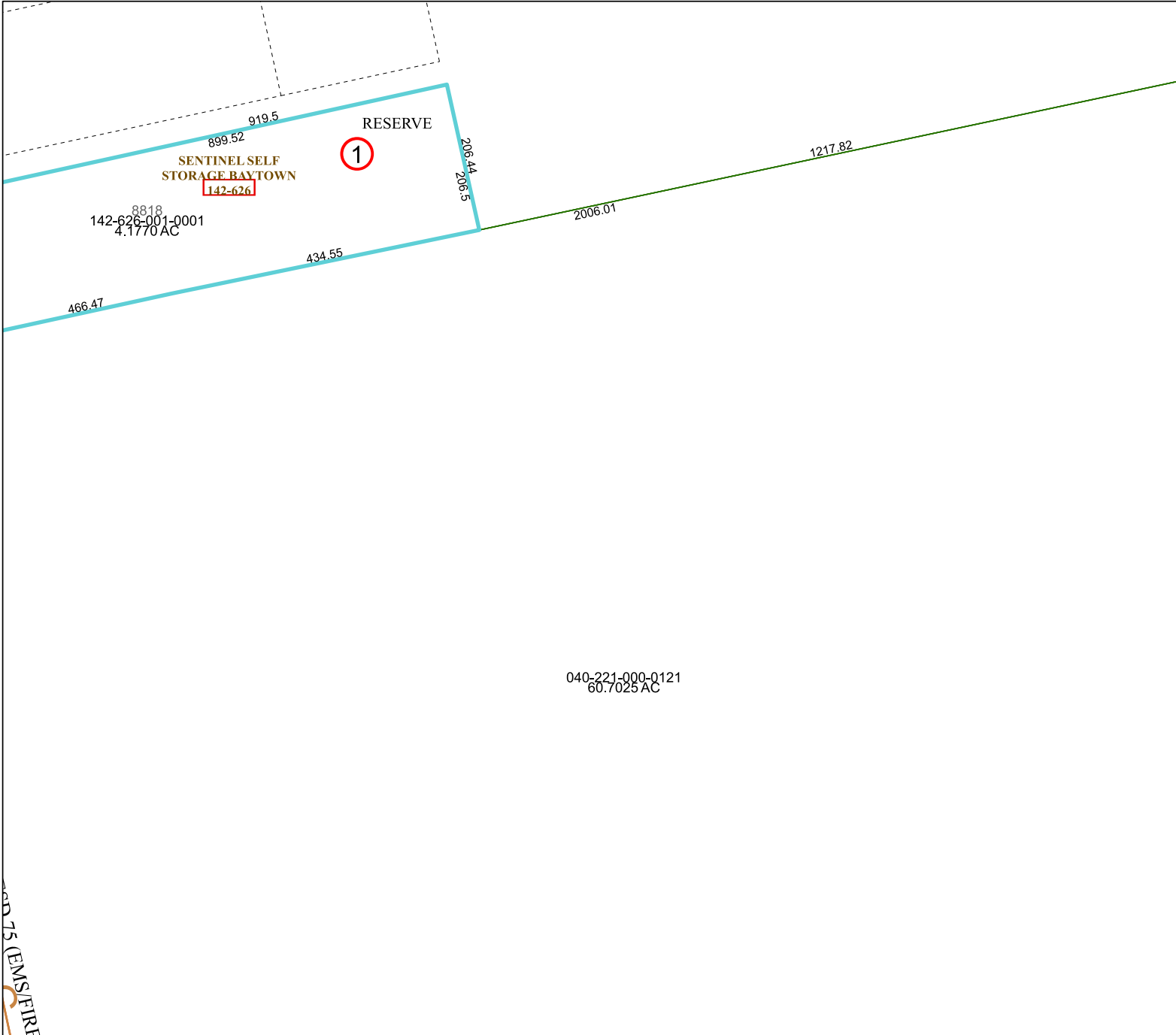


6361D10



Harris Central Appraisal District



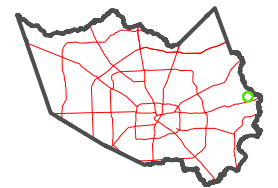
0 45 90 180 Feet

PUBLICATION DATE:
4/8/2024

Geospatial or map data maintained by the Harris Central Appraisal District is for informational purposes and may **not** have been prepared for or be suitable for legal, engineering, or surveying purposes. It does **not** represent an on-the-ground survey and only represents the approximate location of property boundaries.



MAP LOCATION



FACET 6360B2

12	9	10	11	12
4	1	2	3	4
8	5	6	7	8

6360B6

6360B1

6360B3

75 (EMS/FIRE)