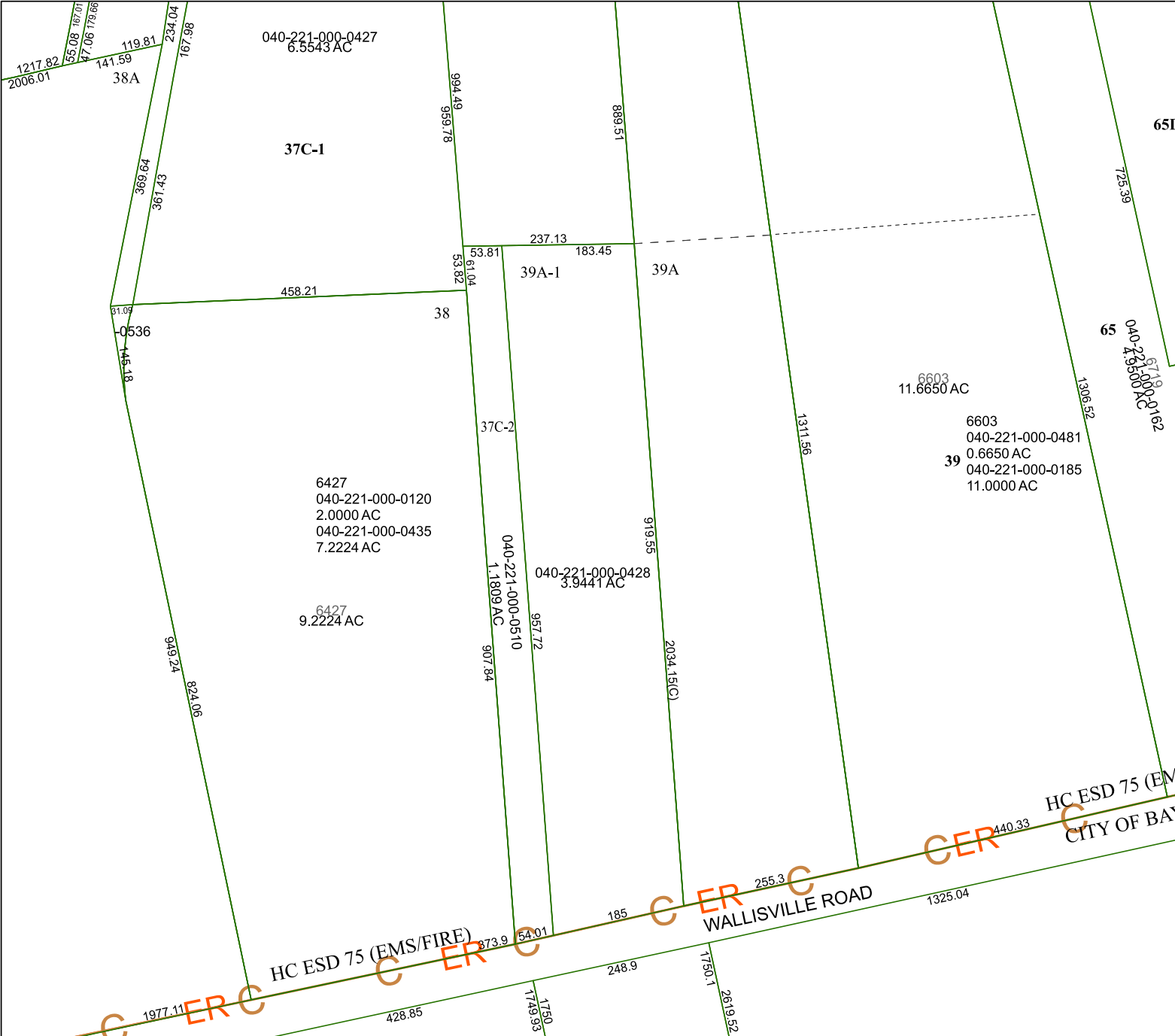


6361D11



Harris Central Appraisal District



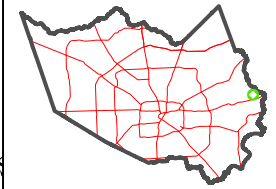
0 45 90 180 Feet

PUBLICATION DATE:
4/8/2024

Geospatial or map data maintained by the Harris Central Appraisal District is for informational purposes and may not have been prepared for or be suitable for legal, engineering, or surveying purposes. It does not represent an on-the-ground survey and only represents the approximate location of property boundaries.



MAP LOCATION



FACET 6360B3

9	10	11	12	9
1	2	3	4	1
5	6	7	8	5

6360B7

6360B2

6360B4

65D

65

39

HC ESD 75 (EMS/FIRE)

HC ESD 75 (EMS)
CITY OF BAYTOWN

WALLISVILLE ROAD

CER

CER

CER

CER