

Harris Central Appraisal District

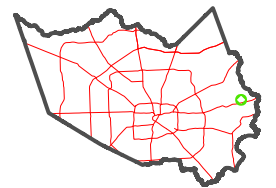


0 45 90 180 Feet

PUBLICATION DATE: 12/30/2023

Geospatial or map data maintained by the Harris Central Appraisal District is for informational purposes and may not have been prepared for or be suitable for legal, engineering, or surveying purposes. It does not represent an on-the-ground survey and only represents the approximate location of property boundaries.

MAP LOCATION

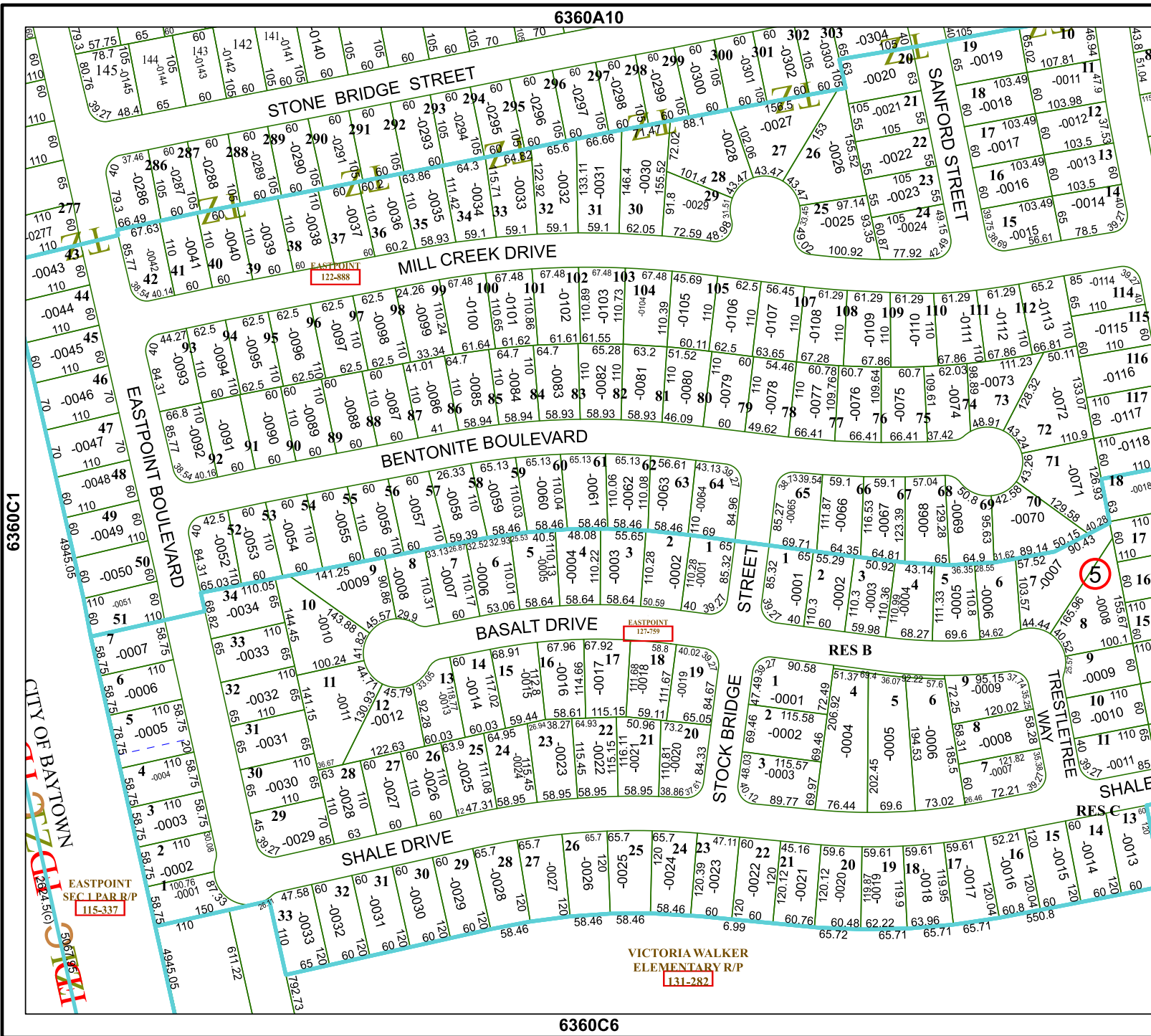


FACET 6360C2

| | | | | |
|----|---|----|----|----|
| 12 | 9 | 10 | 11 | 12 |
| 4 | 1 | 2 | 3 | 4 |
| 8 | 5 | 6 | 7 | 8 |

6360A10

6360C6



6360C

6360C

CITY OF BAYTOWN
 1777
 2024-5(6)
 506765
 506765

EASTPOINT SEC 1 PAR R/P
 115-337

VICTORIA WALKER
 ELEMENTARY R/P
 131-282