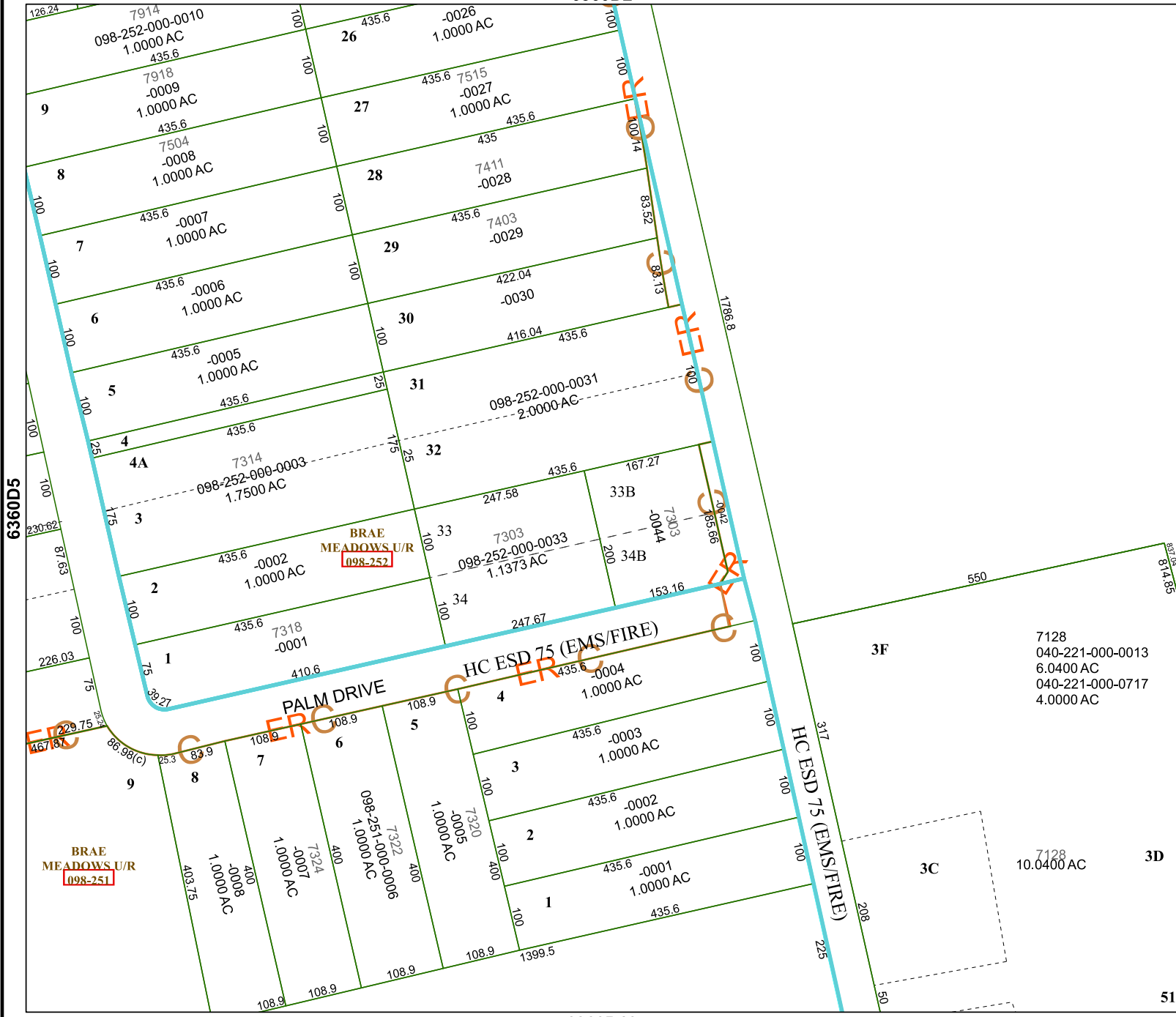


6360D2



6360D5

6360D7

6360D10

Harris Central Appraisal District



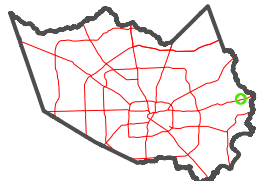
0 45 90 180 Feet

PUBLICATION DATE: 2/28/2024

Geospatial or map data maintained by the Harris Central Appraisal District is for informational purposes and may not have been prepared for or be suitable for legal, engineering, or surveying purposes. It does not represent an on-the-ground survey and only represents the approximate location of property boundaries.



MAP LOCATION



7128
040-221-000-0013
6.0400 AC
040-221-000-0717
4.0000 AC

FACET 6360D6

4	1	2	3	4
8	5	6	7	8
12	9	10	11	12

3F
3D
51