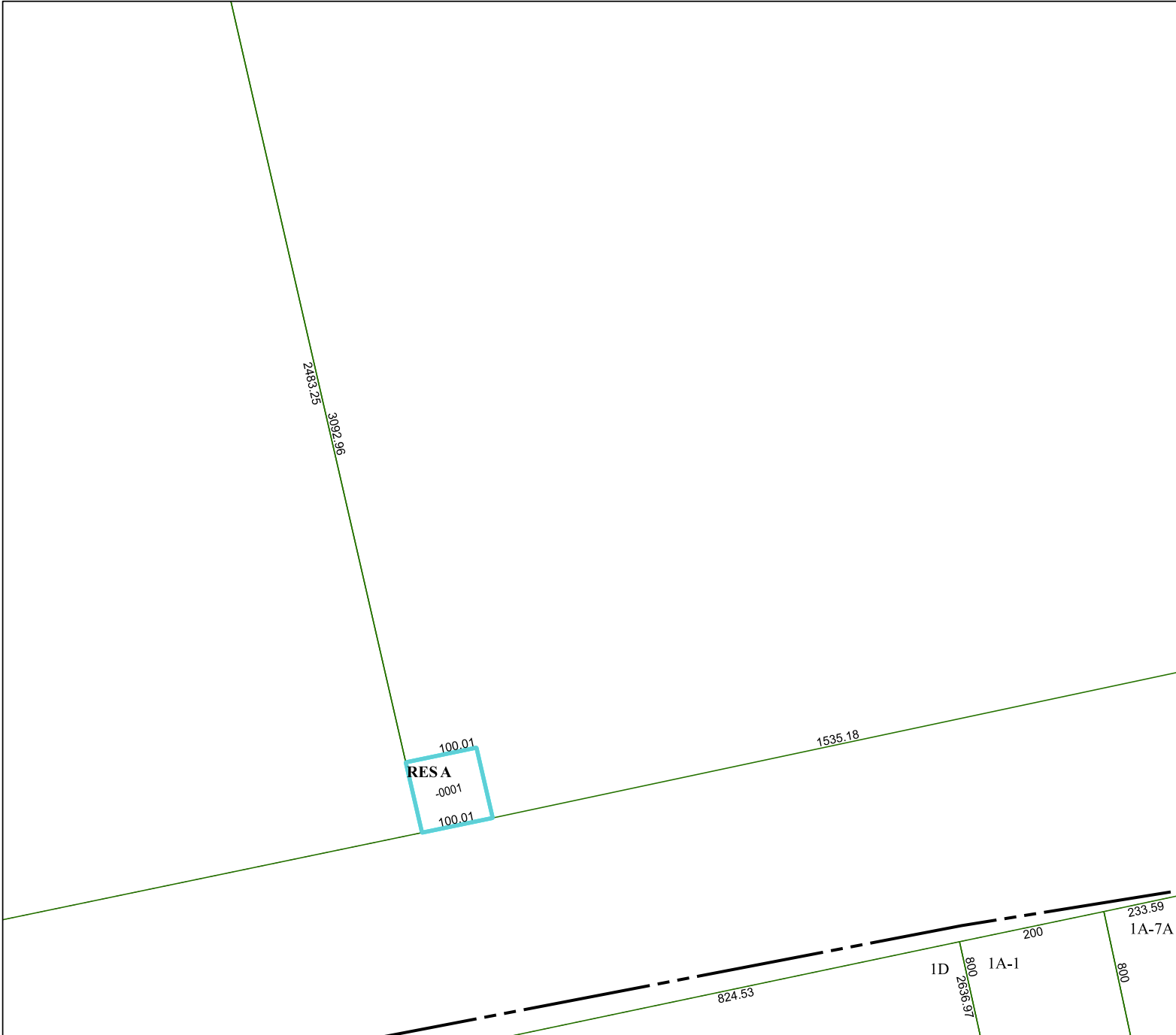


6360D4

6360D7



6360D12

Harris Central Appraisal District



0 45 90 180
Feet

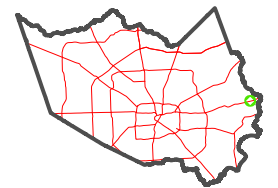
PUBLICATION DATE:
2/28/2024

Geospatial or map data maintained by the Harris Central Appraisal District is for informational purposes and may not have been prepared for or be suitable for legal, engineering, or surveying purposes. It does not represent an on-the-ground survey and only represents the approximate location of property boundaries.



6460C5

MAP LOCATION



FACET 6360D8

2	3	4	1	2
6	7	8	5	6
10	11	12	9	10