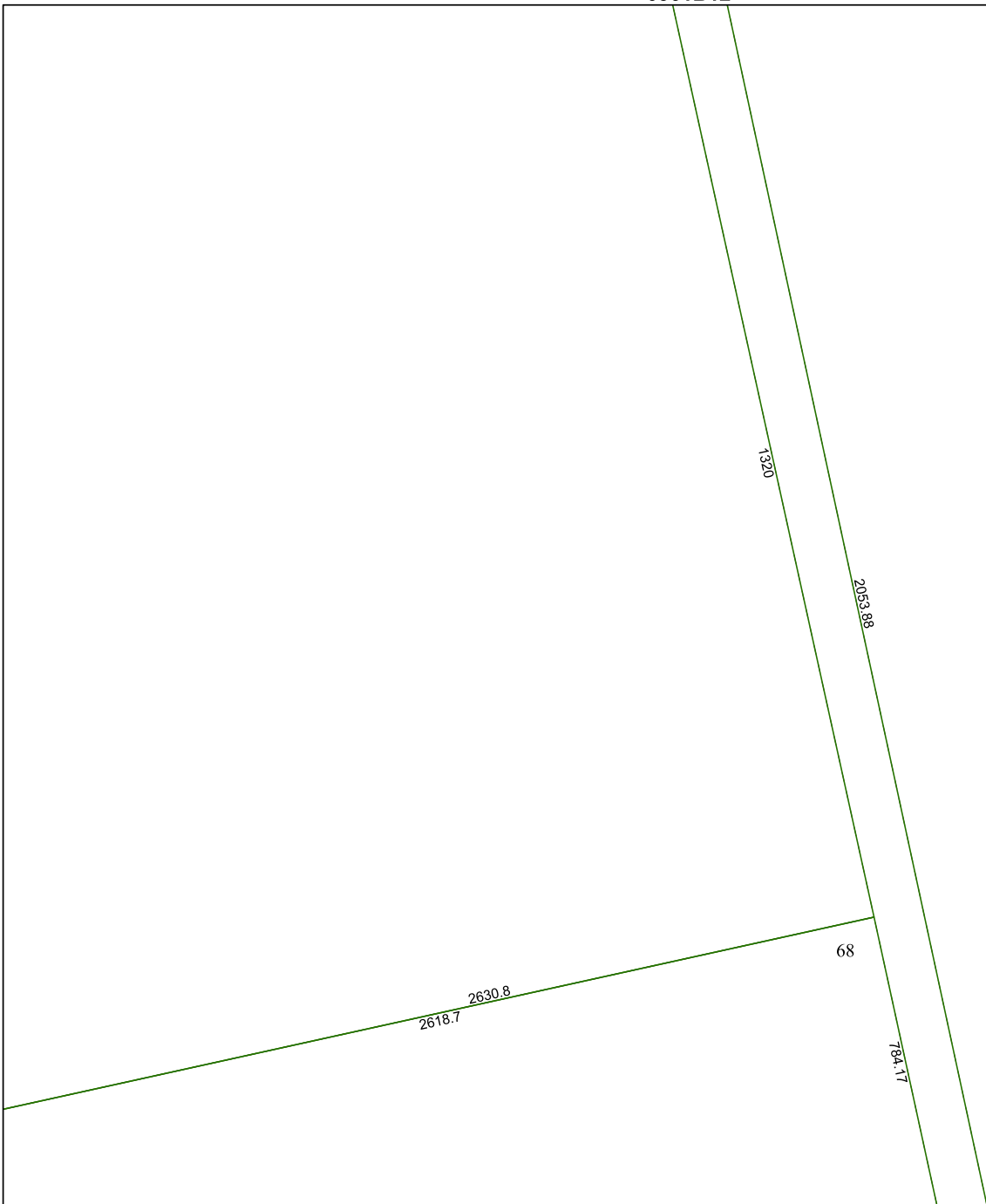


6361B12

6361D3



6361D8

Harris Central Appraisal District



0 45 90 180 Feet

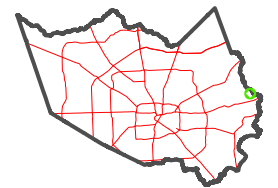
PUBLICATION DATE:
6/22/2023

Geospatial or map data maintained by the Harris Central Appraisal District is for informational purposes and may **not** have been prepared for or be suitable for legal, engineering, or surveying purposes. It does **not** represent an on-the-ground survey and only represents the approximate location of property boundaries.



6461C1

MAP LOCATION



FACET 6361D4

10	11	12	9	10
2	3	4	1	2
6	7	8	5	6