

6361D3

# Harris Central Appraisal District



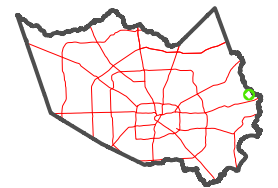
0 45 90 180 Feet

PUBLICATION DATE:  
6/22/2023

Geospatial or map data maintained by the Harris Central Appraisal District is for informational purposes and may **not** have been prepared for or be suitable for legal, engineering, or surveying purposes. It does **not** represent an on-the-ground survey and only represents the approximate location of property boundaries.



MAP LOCATION



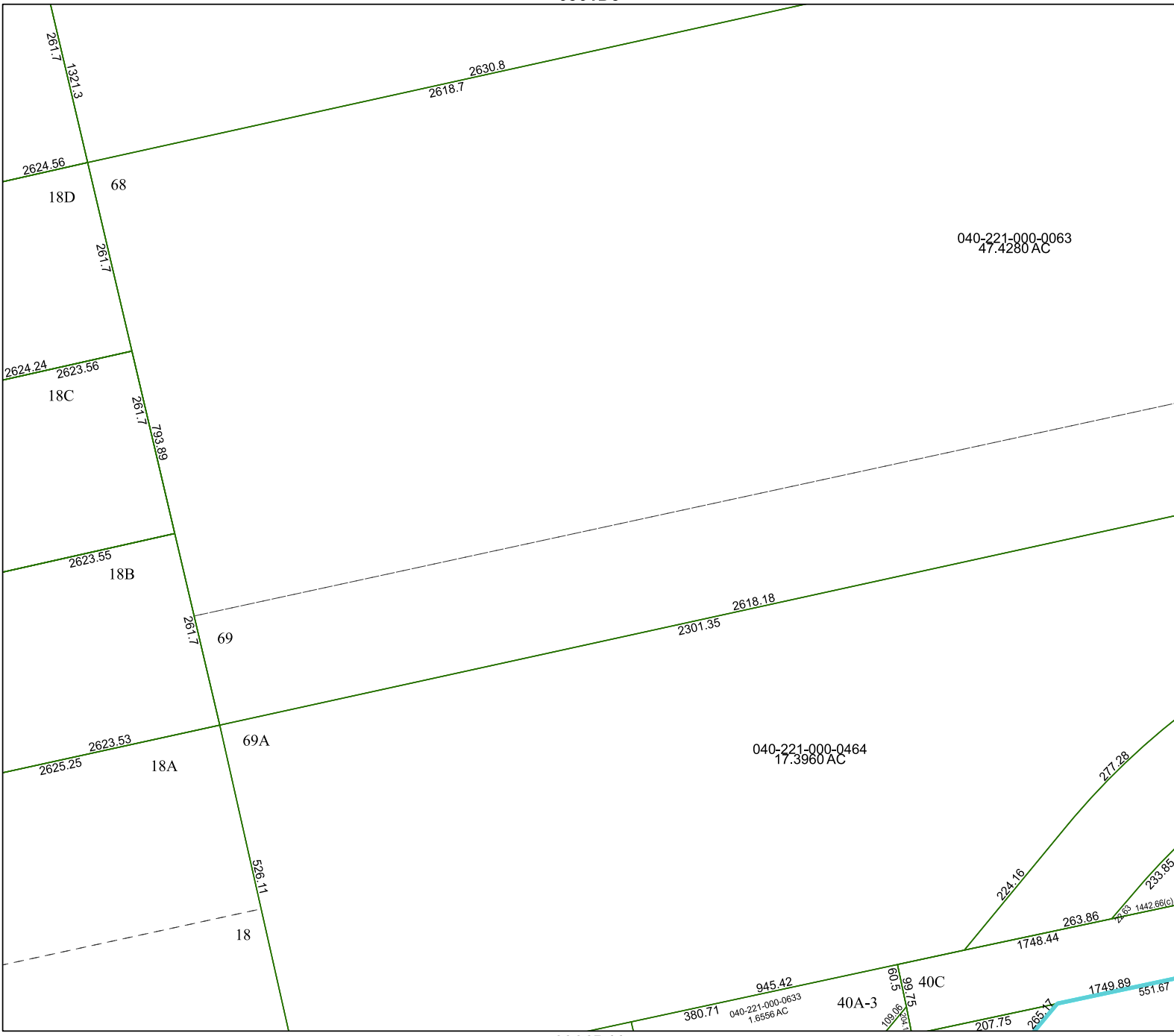
## FACET 6361D7

1	2	3	4	1
5	6	7	8	5
9	10	11	12	9

6361D11

6361D6

6361D8



040-221-000-0063  
47.4280 AC

040-221-000-0464  
17.3960 AC

040-221-000-0633  
1.6556 AC

18D 68

18C

18B

18A

18

40A-3

40C

261.7  
1321.3

2618.7  
2630.8

2624.56

2624.24  
2623.56

2623.55

2625.25  
2623.53

261.7

526.11

2301.35  
2618.18

945.42

380.71

60.3

69.75

207.75

266.11

1748.44

263.86

224.16

277.28

233.85

1442.66(c)

1749.89

551.67

793.89