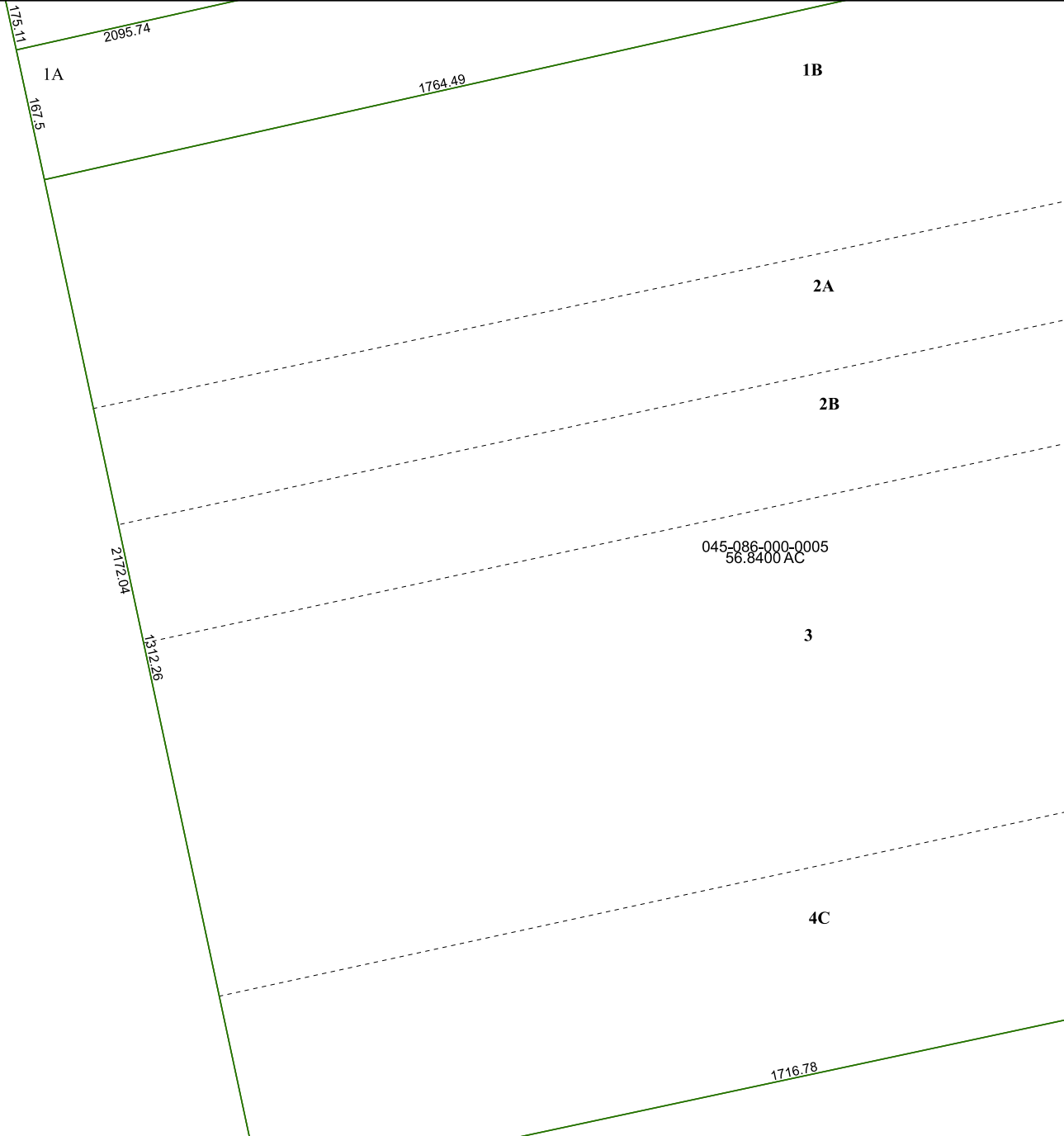


6363A5



6363C1

6263B12

Harris Central Appraisal District



0 45 90 180 Feet

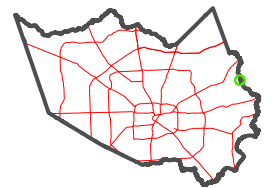
PUBLICATION DATE:
1/4/2023

Geospatial or map data maintained by the Harris Central Appraisal District is for informational purposes and may **not** have been prepared for or be suitable for legal, engineering, or surveying purposes. It does **not** represent an on-the-ground survey and only represents the approximate location of property boundaries.



6363A10

MAP LOCATION



FACET 6363A9

7	8	5	6	7
11	12	9	10	11
3	4	1	2	3