

Harris Central Appraisal District



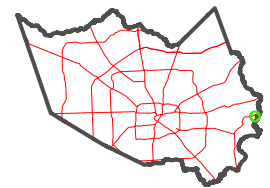
0 45 90 180 Feet

PUBLICATION DATE: 1/22/2024

Geospatial or map data maintained by the Harris Central Appraisal District is for informational purposes and may not have been prepared for or be suitable for legal, engineering, or surveying purposes. It does not represent an on-the-ground survey and only represents the approximate location of property boundaries.

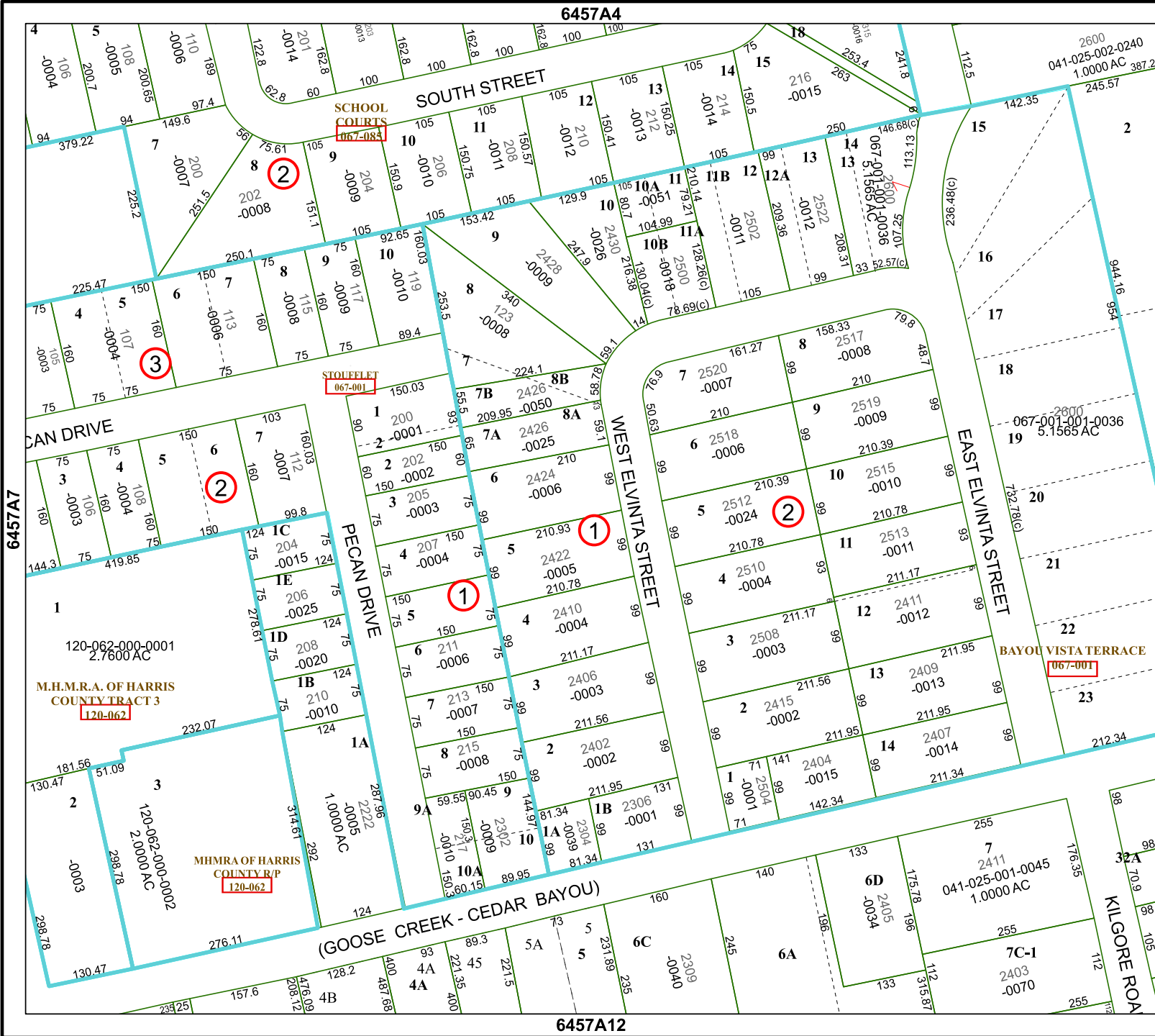


MAP LOCATION



FACET 6457A8

2	3	4	5	6
6	7	8	9	10
10	11	12	9	10



6457A4

6457A12

6457A7

6457B5

SCHOOL COURTS
067-083

STOFFELETT
067-001

M.H.M.R.A. OF HARRIS COUNTY TRACT 3
120-062

MHMRA OF HARRIS COUNTY R/P
120-062

067-001

041-025-002-0240
1.0000 AC 387.2

067-001-001-0036
5.1565 AC

041-025-001-0045
1.0000 AC