

Harris Central Appraisal District

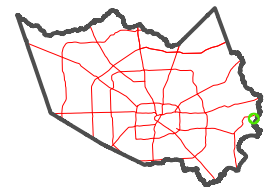


0 45 90 180 Feet

PUBLICATION DATE: 1/10/2023

Geospatial or map data maintained by the Harris Central Appraisal District is for informational purposes and may not have been prepared for or be suitable for legal, engineering, or surveying purposes. It does not represent an on-the-ground survey and only represents the approximate location of property boundaries.

MAP LOCATION

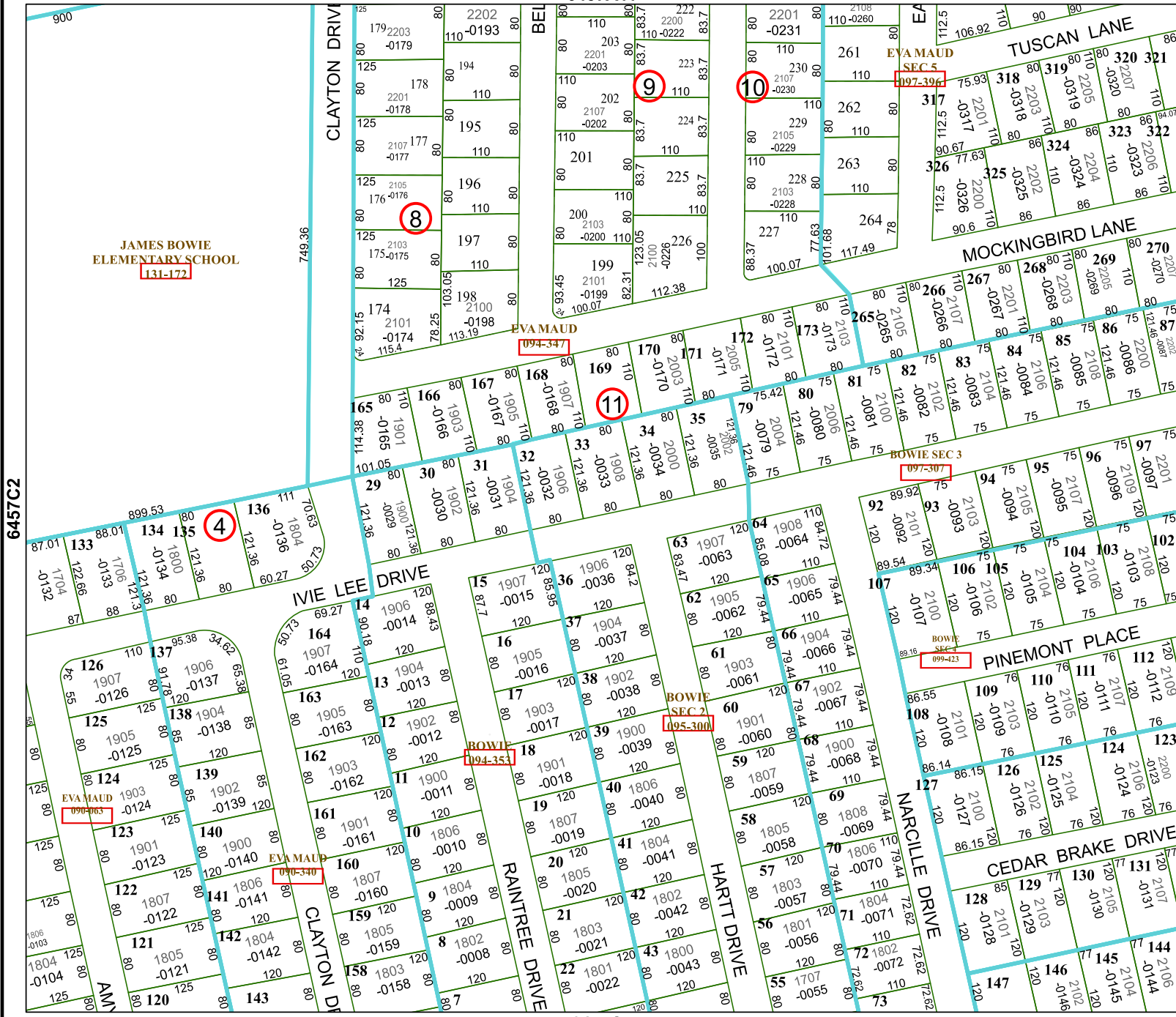


FACET 6457C3

9	10	11	12	9
1	2	3	4	1
5	6	7	8	5

6457A11

6457C7



JAMES BOWIE ELEMENTARY SCHOOL
131-172

6457C2

6457C4

