

# Harris Central Appraisal District



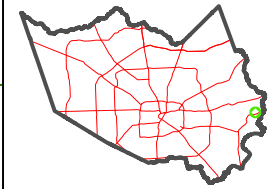
0 45 90 180 Feet

PUBLICATION DATE: 12/30/2023

Geospatial or map data maintained by the Harris Central Appraisal District is for informational purposes and may not have been prepared for or be suitable for legal, engineering, or surveying purposes. It does not represent an on-the-ground survey and only represents the approximate location of property boundaries.

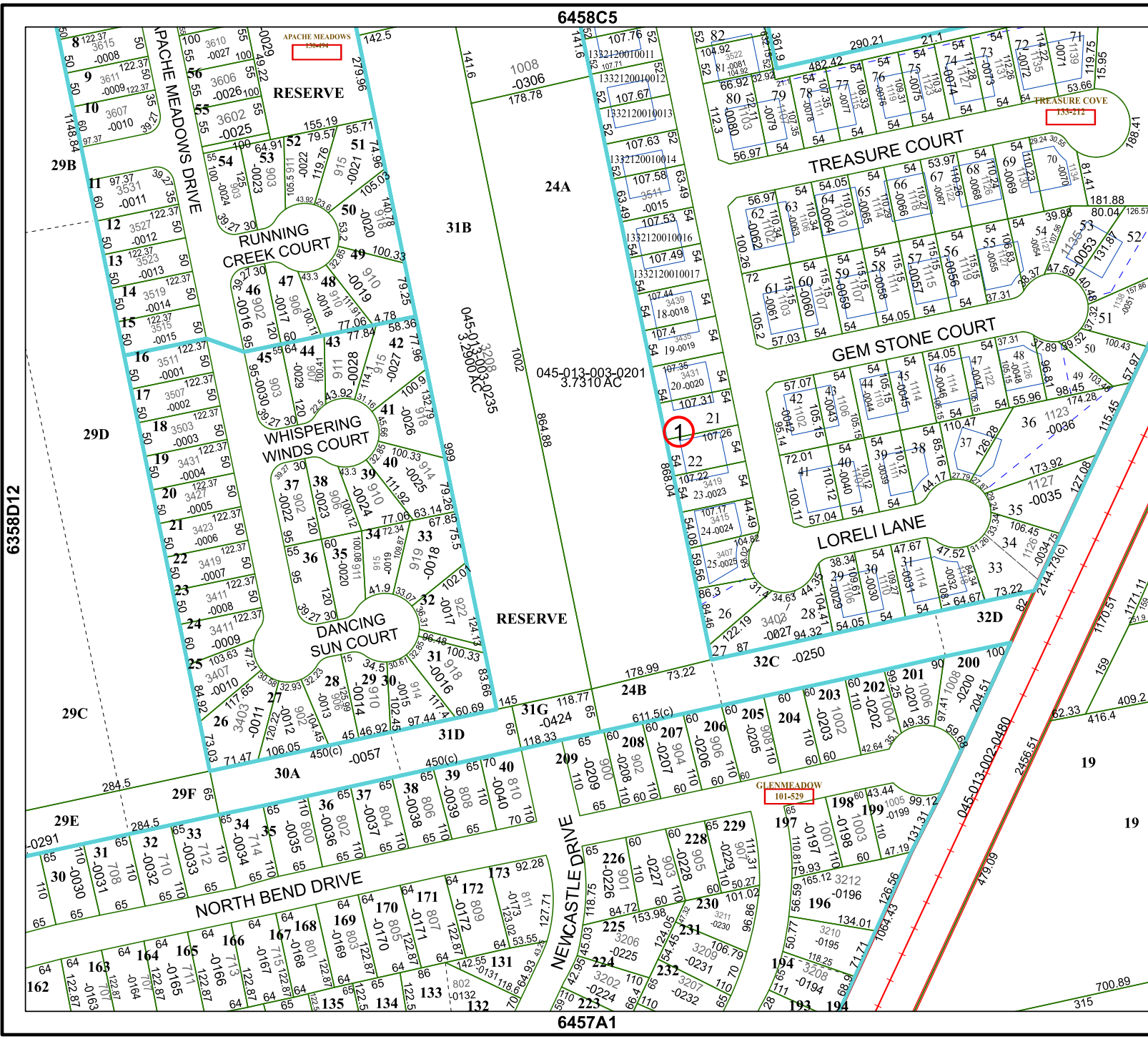


MAP LOCATION



## FACET 6458C9

7	8	5	6	7
11	12	9	10	11
3	4	1	2	3



6358D12

6458C10

6458C5

6457A1