

6459A2

Harris Central Appraisal District



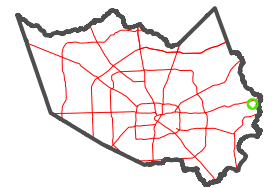
0 45 90 180 Feet

PUBLICATION DATE:
1/22/2024

Geospatial or map data maintained by the Harris Central Appraisal District is for informational purposes and may not have been prepared for or be suitable for legal, engineering, or surveying purposes. It does not represent an on-the-ground survey and only represents the approximate location of property boundaries.



MAP LOCATION



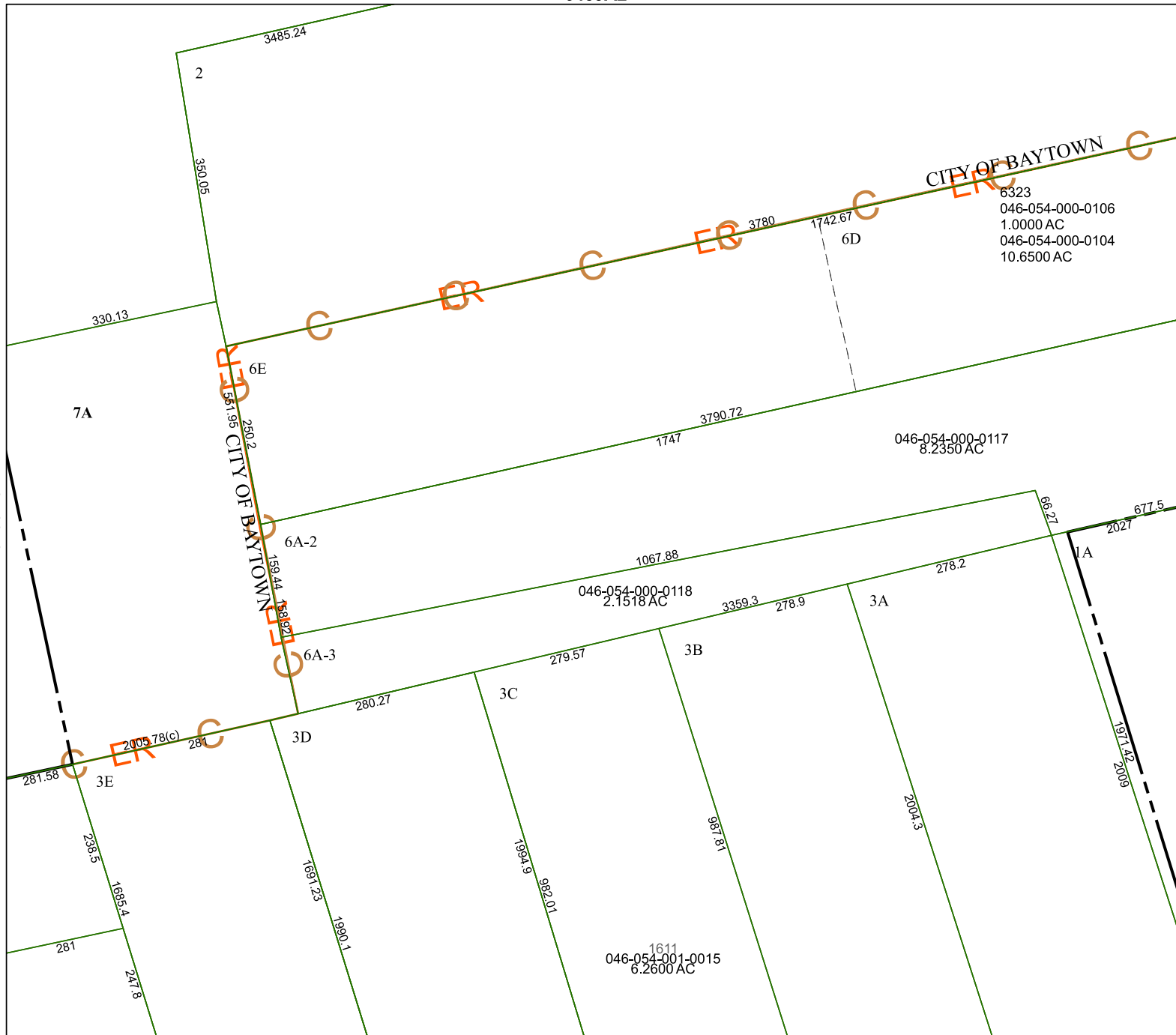
FACET 6459A6

4	1	2	3	4
8	5	6	7	8
12	9	10	11	12

6459A10

6459A5

6459A7



CITY OF BAYTOWN

6323
046-054-000-0106
1.0000 AC
046-054-000-0104
10.6500 AC

CITY OF BAYTOWN

ER

ER

ER