

Harris Central Appraisal District



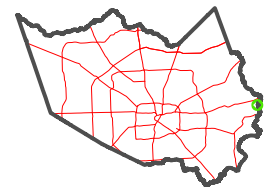
0 45 90 180 Feet

PUBLICATION DATE:
5/6/2024

Geospatial or map data maintained by the Harris Central Appraisal District is for informational purposes and may not have been prepared for or be suitable for legal, engineering, or surveying purposes. It does not represent an on-the-ground survey and only represents the approximate location of property boundaries.



MAP LOCATION

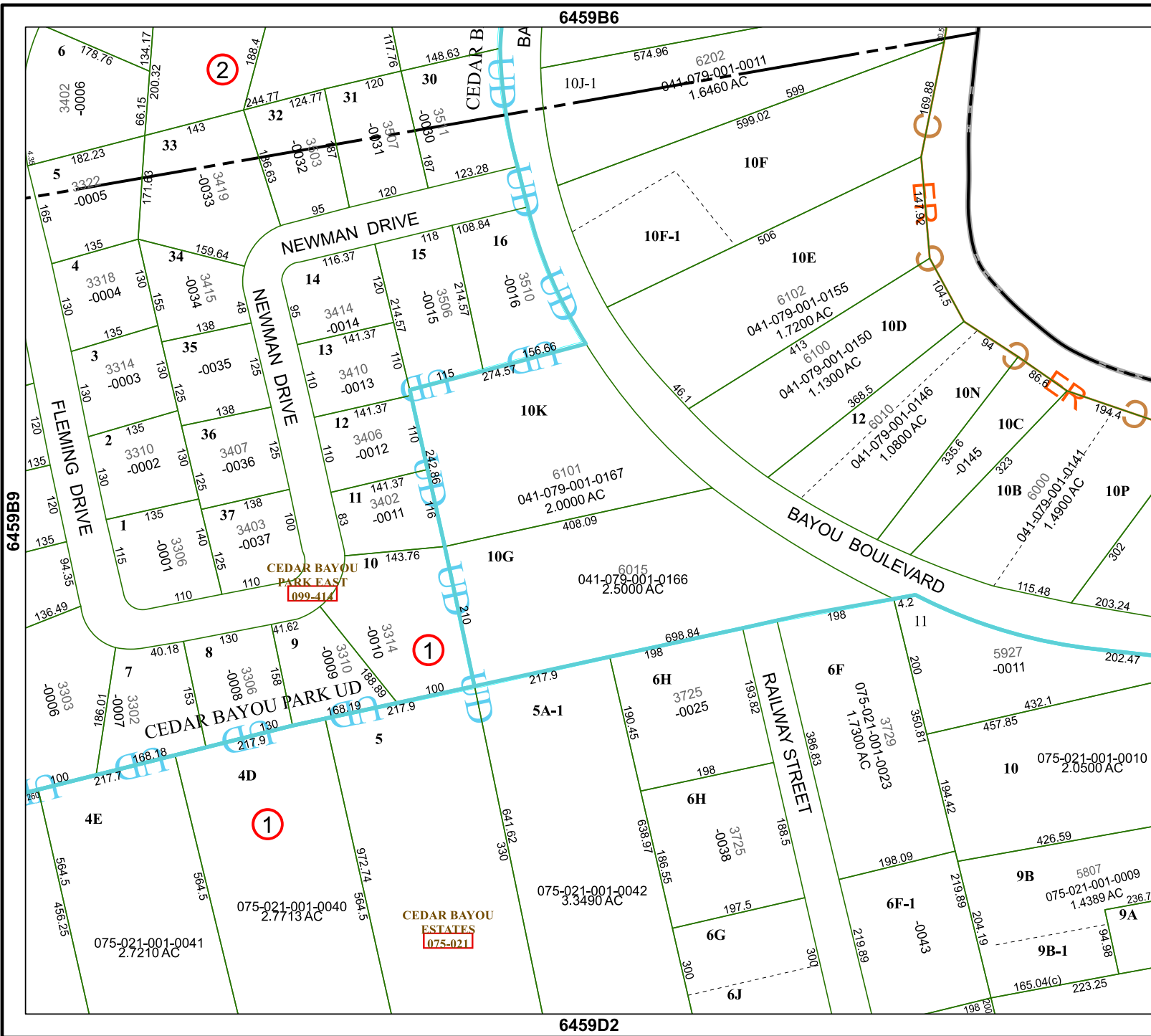


FACET 6459B10

8	5	6	7	8
12	9	10	11	12
4	1	2	3	4

6459B6

6459D2



CEDAR BAYOU PARK EAST
099-414

CEDAR BAYOU ESTATES
075-021

2

1

1