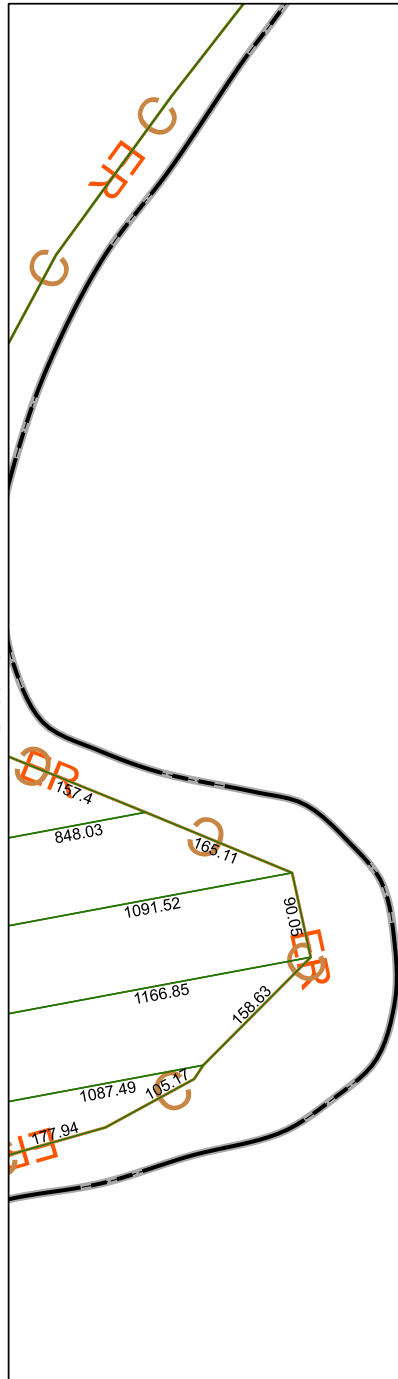


6459B3

6459B6



6459B11

Harris Central Appraisal District



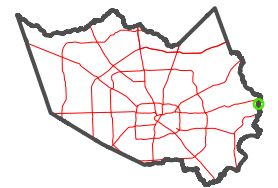
0 45 90 180
Feet

PUBLICATION DATE:
5/6/2024

Geospatial or map data maintained by the Harris Central Appraisal District is for informational purposes and may **not** have been prepared for or be suitable for legal, engineering, or surveying purposes. It does **not** represent an on-the-ground survey and only represents the approximate location of property boundaries.



MAP LOCATION



FACET

6459B7

1	2	3	4	
5	6	7	8	
9	10	11	12	

6459B8