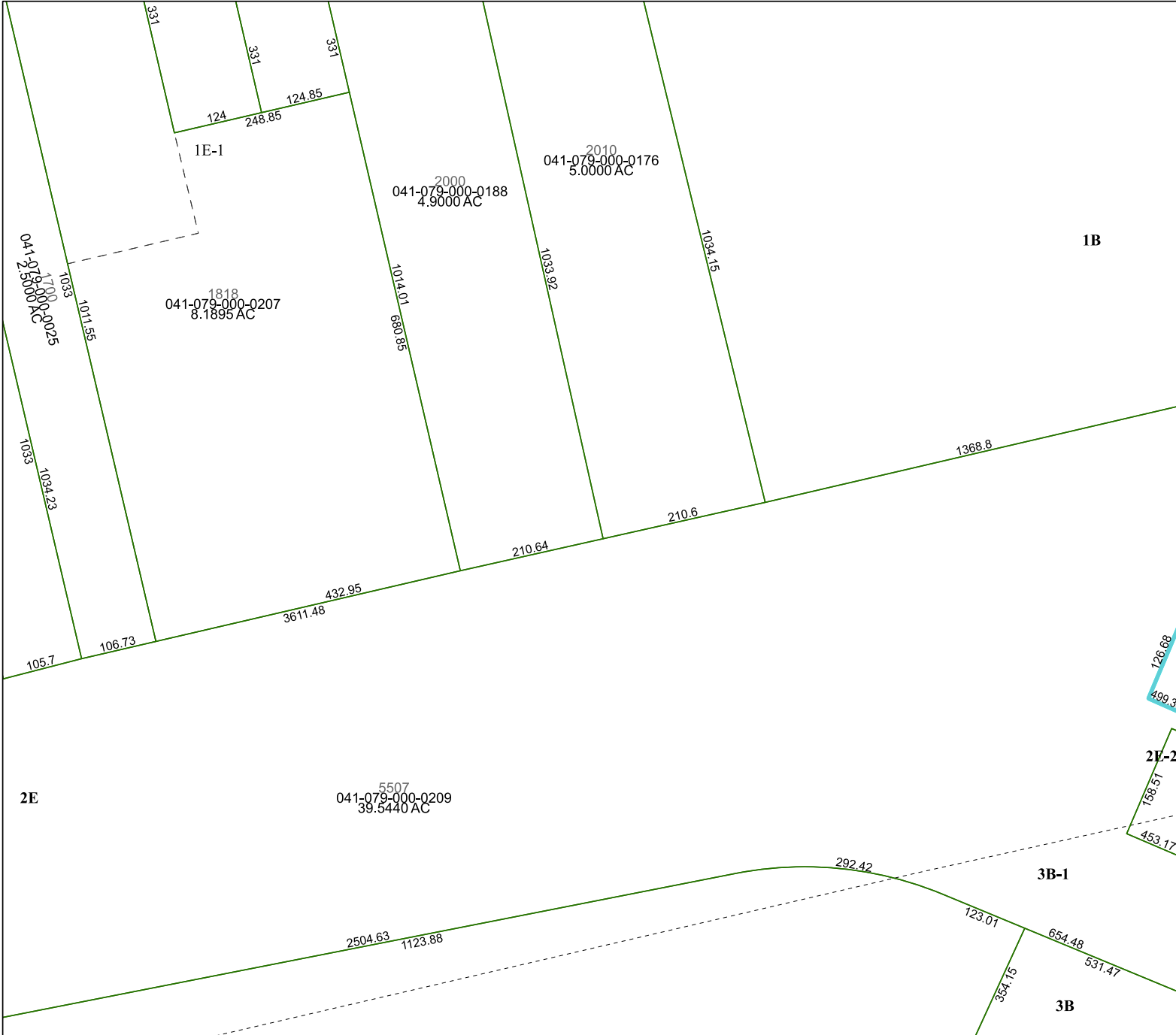


6459A11



6459C2

2E

1B

Harris Central Appraisal District



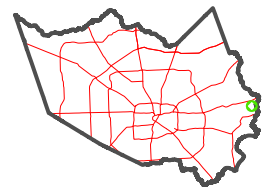
0 45 90 180 Feet

PUBLICATION DATE:
2/13/2023

Geospatial or map data maintained by the Harris Central Appraisal District is for informational purposes and may **not** have been prepared for or be suitable for legal, engineering, or surveying purposes. It does **not** represent an on-the-ground survey and only represents the approximate location of property boundaries.



MAP LOCATION



FACET 6459C3

9	10	11	12	9
1	2	3	4	1
5	6	7	8	5

6459C7

6459C4

2E-2

3B-1

3B