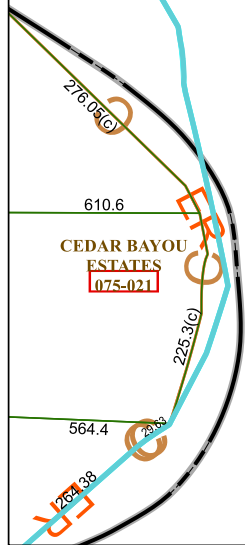


6459D3



# Harris Central Appraisal District



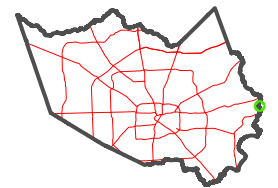
0 45 90 180 Feet

PUBLICATION DATE:  
2/13/2023

Geospatial or map data maintained by the Harris Central Appraisal District is for informational purposes and may **not** have been prepared for or be suitable for legal, engineering, or surveying purposes. It does **not** represent an on-the-ground survey and only represents the approximate location of property boundaries.



## MAP LOCATION



## FACET 6459D4

10	11	12
2	3	4
6	7	8

6559C1