

6460B7

1805.98

1

BAYTOWN 10
COMMERCE CENTER
145-874

6460B10

6460D3

Harris Central Appraisal District



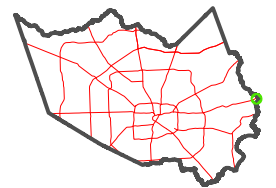
0 45 90 180
Feet

PUBLICATION DATE:
2/28/2024

Geospatial or map data maintained by the Harris Central Appraisal District is for informational purposes and may not have been prepared for or be suitable for legal, engineering, or surveying purposes. It does not represent an on-the-ground survey and only represents the approximate location of property boundaries.

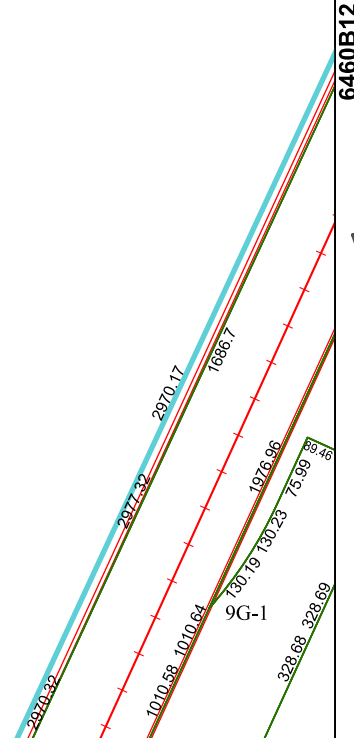


MAP LOCATION



FACET 6460B11

5	6	7	8	5
9	10	11	12	9
1	2	3	4	1



6460B12