

Harris Central Appraisal District

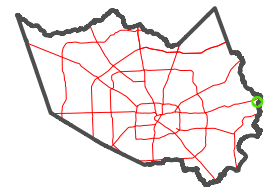


0 45 90 180 Feet

PUBLICATION DATE:
4/3/2023

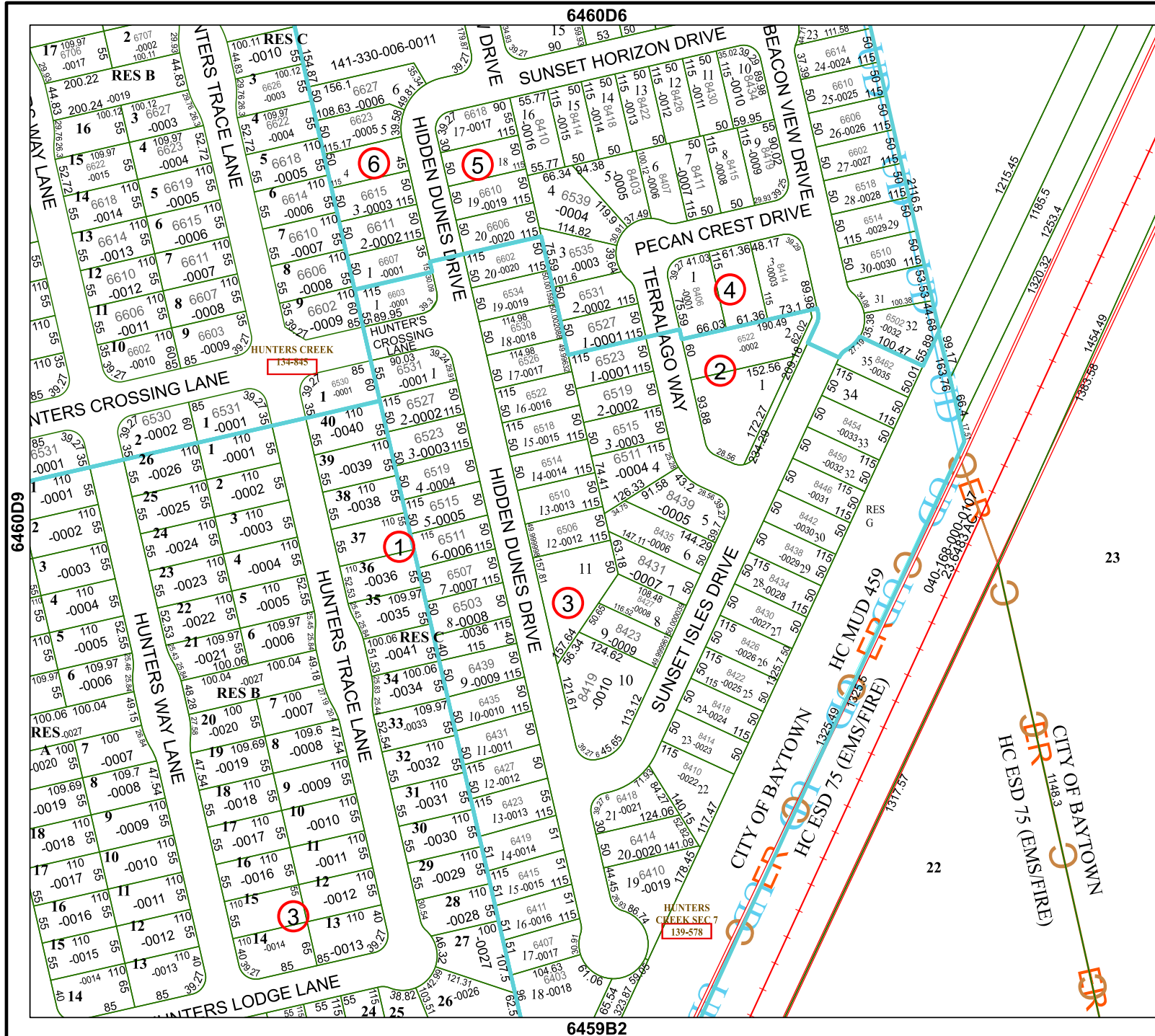
Geospatial or map data maintained by the Harris Central Appraisal District is for informational purposes and may not be suitable for legal, engineering, or surveying purposes. It does not represent an on-the-ground survey and only represents the approximate location of property boundaries.

MAP LOCATION



FACET 6460D10

8	5	6	7	8
12	9	10	11	12
4	1	2	3	4



6460D6

6459B2

6460D9

6460D11

23

22

