

6460D5

# Harris Central Appraisal District

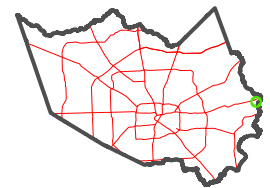


0 45 90 180 Feet

PUBLICATION DATE: 4/3/2023

Geospatial or map data maintained by the Harris Central Appraisal District is for informational purposes and may not have been prepared for or be suitable for legal, engineering, or surveying purposes. It does not represent an on-the-ground survey and only represents the approximate location of property boundaries.

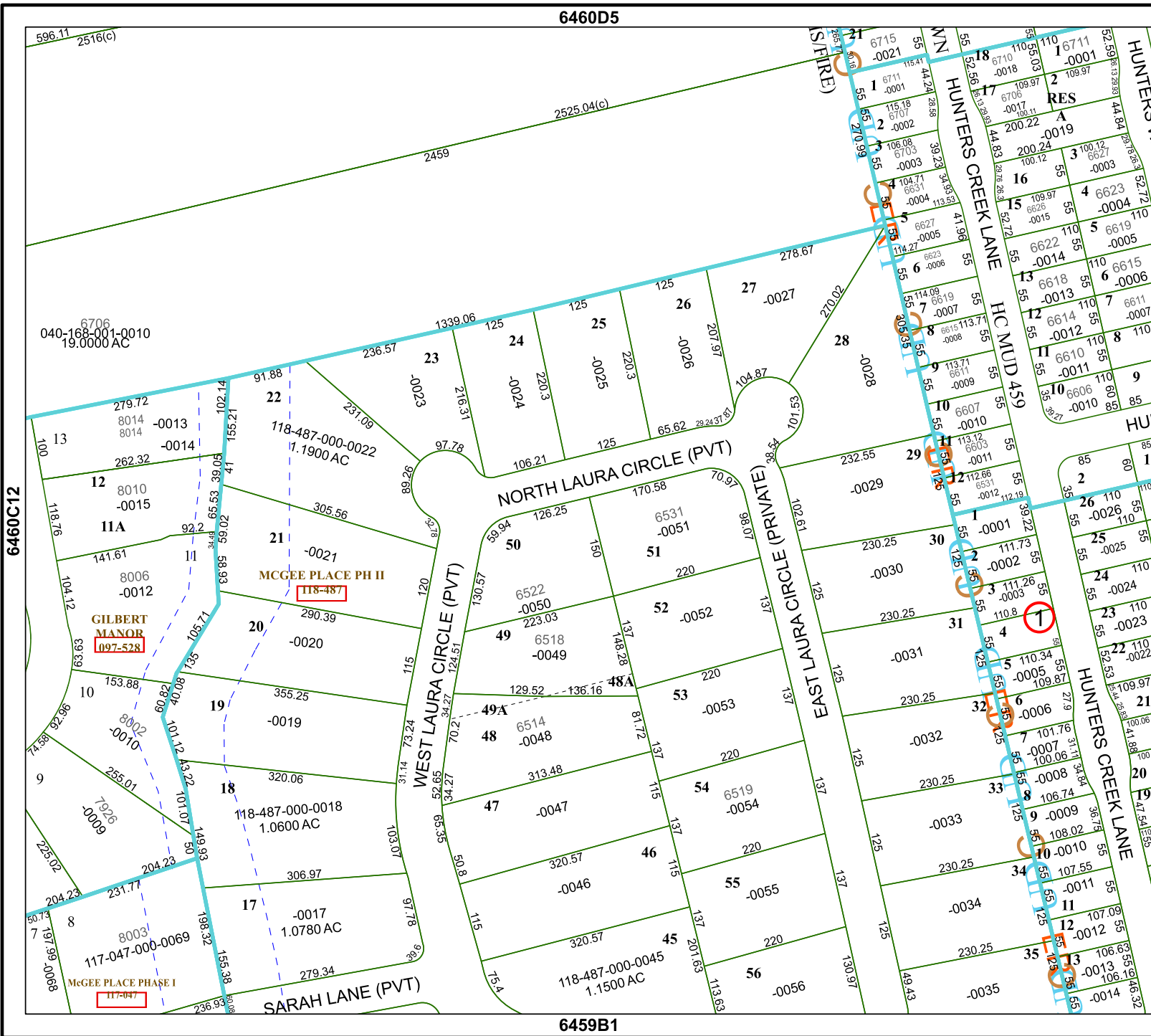
MAP LOCATION



## FACET 6460D9

7	8	5	6	7
11	12	9	10	11
3	4	1	2	3

6459B1



596.11 2516(c)

2525.04(c)

2459

040-168-001-0010  
19.0000 AC

13

8014 -0013  
8014 -0014

12

8010 -0015

11A

141.61 -0012

8006 -0012

GILBERT MANOR  
097-528

10

153.88 -0010

8002 -0010

7926 -0009

9

255.01 -0009

204.23 -0009

231.77 -0009

8003 -0009

117-047-000-0069

117-047

McGEE PLACE PHASE I

17

-0017  
1.0780 AC

22

279.72 -0013  
8014 -0014

118-487-000-0022  
1.1900 AC

21

-0021

McGEE PLACE PH II  
118-487

20

-0020

19

355.25 -0019

18

320.06 -0018

118-487-000-0018  
1.0600 AC

17

306.97 -0017

1.0780 AC

16

306.97 -0016

15

109.97 -0015

14

102.14 -0014

23

236.57 -0023

24

-0024

25

-0025

26

-0026

27

-0027

28

-0028

29

-0029

30

-0030

31

-0031

32

-0032

33

-0033

22

279.72 -0013  
8014 -0014

118-487-000-0022  
1.1900 AC

21

-0021

McGEE PLACE PH II  
118-487

20

-0020

19

355.25 -0019

18

320.06 -0018

118-487-000-0018  
1.0600 AC

17

306.97 -0017

1.0780 AC

16

306.97 -0016

15

109.97 -0015

14

102.14 -0014

23

236.57 -0023

24

-0024

25

-0025

26

-0026

27

-0027

28

-0028

29

-0029

30

-0030

31

-0031

32

-0032

33

-0033

22

279.72 -0013  
8014 -0014

118-487-000-0022  
1.1900 AC

21

-0021

McGEE PLACE PH II  
118-487

20

-0020

19

355.25 -0019

18

320.06 -0018

118-487-000-0018  
1.0600 AC

17

306.97 -0017

1.0780 AC

16

306.97 -0016

15

109.97 -0015

14

102.14 -0014

23

236.57 -0023

24

-0024

25

-0025

26

-0026

27

-0027

28

-0028

29

-0029

30

-0030

31

-0031

32

-0032

33

-0033

22

279.72 -0013  
8014 -0014

118-487-000-0022  
1.1900 AC

21

-0021

McGEE PLACE PH II  
118-487

20

-0020

19

355.25 -0019

18

320.06 -0018

118-487-000-0018  
1.0600 AC

17

306.97 -0017

1.0780 AC

16

306.97 -0016

15

109.97 -0015

14

102.14 -0014

23

236.57 -0023

24

-0024

25

-0025

26

-0026

27

-0027

28

-0028

29

-0029

30

-0030

31

-0031

32

-0032

33

-0033

22

279.72 -0013  
8014 -0014

118-487-000-0022  
1.1900 AC

21

-0021

McGEE PLACE PH II  
118-487

20

-0020

19

355.25 -0019

18

320.06 -0018

118-487-000-0018  
1.0600 AC

17

306.97 -0017

1.0780 AC

16

306.97 -0016

15

109.97 -0015

14

102.14 -0014

23

236.57 -0023

24

-0024

25

-0025

26

-0026

27

-0027

28

-0028

29

-0029

30

-0030

31

-0031

32

-0032

33

-0033

22

279.72 -0013  
8014 -0014

118-487-000-0022  
1.1900 AC

21

-0021

McGEE PLACE PH II  
118-487

20

-0020

19

355.25 -0019

18

320.06 -0018

118-487-000-0018  
1.0600 AC

17

306.97 -0017

1.0780 AC

16

306.97 -0016

15

109.97 -0015

14

102.14 -0014

23

236.57 -0023

24

-0024

25

-0025

26

-0026

27

-0027

28

-0028

29

-0029

30

-0030

31

-0031

32

-0032

33